

Historic, Archive Document

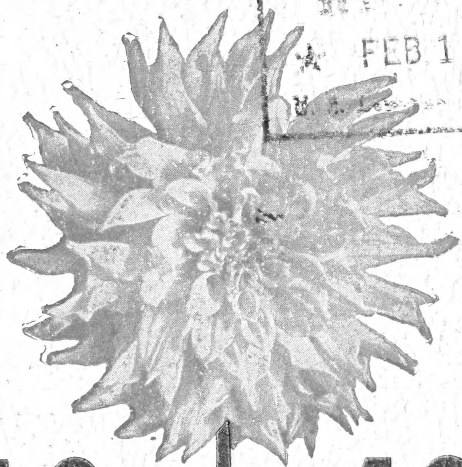
Do not assume content reflects current scientific knowledge, policies, or practices.

6241

EDISON'S BOOK of

Dahlias for

LIBRARY
★ FEB 15 1943 ★
M. A. ...



19  **43**

Plants or Roots

Springhill Dahlia Farm

R. R. No. 2

Grand Rapids, Michigan

COLLECTIONS

Please Read Carefully

These plant and root collections are made up from varieties that have grown well in our own and other gardens we visited and should do well in your garden if given ordinary care. If you give them special care like spraying for insects, watering and the most important, good cultivation, you should be well rewarded for the extra care by the wonderful blooms. Of course there are some garden soils that cause failures, also improper planting and unfavorable weather, and we cannot guarantee the growth of our plants in your garden, but we do guarantee safe delivery and in good growing condition; also to be true to name, and will gladly replace any received and found otherwise, or make a satisfactory adjustment. Plants shipped anywhere in the United States

See Inside Back Cover for Planting Instructions.

Quantity Discounts

3 of any one variety of roots or plants, deduct _____	15%
6 of any one variety of roots or plants, deduct _____	25%
12 of any one variety of roots or plants deduct _____	30%

Every order we get over \$2.00 will get some root or plant free. Club your orders with friends and get more extras.

In comparing the discount given in our plant collections with other growers' collections, remember we list most of our plants 40%, the price of roots, instead of 50% as most growers do, and ship in 3 x 3 x 3 inch boxes.

Roots and Plants Free

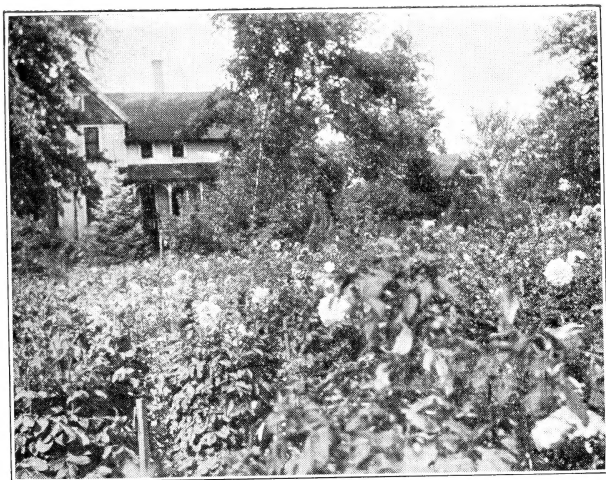
Orders amounting from \$5.00 to \$10.00, choose _____	15%
Orders amounting from \$10.00 to \$25.00, choose _____	20%
Orders amounting from \$25.00 to \$50.00, choose _____	25%
Orders amounting to over \$50.00, choose _____	33 $\frac{1}{3}$ %

These extra stock allowances cannot be taken as cash discounts and do not apply to any Special Collections.

Our Guarantee

We guarantee all stock purchased from us to be true to name and delivered in good condition, and any stock received otherwise will be cheerfully replaced or properly adjusted. But we should be promptly notified. Not responsible in any case for more than the purchase price.

PLEASE NOTE: We do not guarantee the growth of plants in your garden, but usually replace any that go wrong in your garden.



Home of Springhill Dahlia Farm and Section of
Dahlia Show Garden

VISITORS WELCOME

Our show gardens are located on Walker Ave., two and one-quarter miles north of West Leonard St. city limits. Call and get acquainted. It pays.

My gardens and field plantings are at their best usually from September 15th on, as most of the late plantings are in bloom then. Many varieties bloom early in August even if I do not finish planting until July 1st.

1943 GREETINGS

To my dahlia customers and dahlia friends, who visited my gardens and fields, I must give thanks for the past successful season.

The past season we had plenty of rain and this fall a fine root crop, although the frost came early. I have reduced the price on many fine varieties and trust this will meet your approval. Owing to the curtailing of many things on account of the war, I advise ordering and shipping a little earlier in the season. Having purchased many 1943 introductions I am listing some of them in my book, but if there is some certain new ones you want and I do not list, please advise and I will try to furnish you.

Much success with dahlias in your garden depends on good healthy roots and plants to start with, so buy Michigan grown and inspected dahlias to get best results.

Thanking you again for all past favors,

Yours respectfully,

A. T. EDISON.

My Own Special Packing

My plants will again be grown and shipped in the 3x3x3 bands as I still am convinced they are the best. Some growers I know, grow and ship in 3 inch pots but why are some growers who sell plants, growing for their own plantings in the bands? They get a better start and grow nice straight roots to divide, that's why.

Although it costs about 25% more to ship in bands, I will continue to give my customers the benefit and use the 3x3x3 bands.

Special Information

All orders, large or small, will be appreciated. Have your friends write a card for our catalogue. Or if you do not wish to keep our book and care to pass it on to some one interested, it will be appreciated.

State and Federal Inspected Roots and Plants

We ship roots and plants that have been inspected and all out of the state orders will be accompanied by a certificate of inspection.

My modern King Greenhouse is fully equipped to grow plants and we grow and ship them in 3 x 3 x 3 in. bands which hold twice as much dirt as a 3-inch pot, and it stands to reason they are stronger and better.

I do not try to meet the ridiculous prices at which some growers offer plants as you get what you pay for, always.

Growers and Dealers

Ask for our Special Lists but use your business card or letterhead when request is made by mail. Special Plant and Cutting growers complete list ready April first to tenth.

One of the Largest Growers of Pom Pons in the Middle West

ORDER EARLY—As orders are filled in rotation—field-grown roots or thrifty plants if ordered—ordering early will insure the reservation of varieties that later may be sold out. Orders are filled with varieties called for, and unless substitution is asked, I never substitute.

TIME OF SHIPMENT—Unless otherwise requested, tubers will be shipped between April 15th and May 1st. Plants of most varieties can be had from May 4th to June 10th, by express or insured mail, at my expense, any place in the United States (except States west of the Rocky Mountains) on all orders over \$2.00. Orders under \$2.00 add 15c to cover postage and packing. On all orders from western states mentioned, add 2c to price of each root and on all plants priced under \$1.00 add 5c each to cover extra cost.

SPECIAL DELIVERY AND SPECIAL HANDLING—travel the same as first class mail, while regular Parcel Post is fourth class mail. It pays to include the small extra charge to assure prompt delivery.

TERMS—Cash with order unless parties are known to me. No goods sent C. O. D. unless 50 percent of purchase price accompanies order. We will hold your order for you if a deposit of 25 percent is made, balance to be remitted before shipment is made.

REMITTANCES should be made by bank draft, express or postoffice money order or registered letter. Postage stamps accepted up to \$2.00. Coin should not be sent by letter unless registered. Please send 5c, 10c, 15c and 20c stamps.

ERRORS—While my system for handling orders is as near perfect as possible, yet in the rush of business, errors are possible to occur, and I wish to be promptly notified of such and will at once make satisfactory adjustment. Make all complaints to me, not to your friends, as we aim to please.

NAME AND ADDRESS — Remember to write your **Name, Postoffice, County and State**, also give **Street Number or P. O. Box** as plainly as possible.

PLANTING INSTRUCTIONS ON LAST PAGE

Remember plants grown in 3x3x3 boxes (not pots) make the finest clumps, as they get such a good start and are planted just as they are after removing the bands, no removing the dirt to straighten out the roots, the roots are already straight and not pot bound.

Rooted Cuttings

We sell rooted cuttings of any variety I list plants for sale of, in my book at $\frac{1}{3}$ less than the price of a plant. Unless you are an experienced plantgrower, we do not advise the purchase of rooted cuttings.

Rooted cuttings are sold only on the basis of safe delivery and good cuttings and our responsibility ceases there. If purchased, they should be potted soon as received in 3 or 4 inch pots in good potting soil and shaded 3 or 4 days, then grown in a green house or hotbed until you are ready to plant them out.

CLASSIFICATION OF DAHLIAS

Formal Decorative Dahlias (F. D.). Informal Decorative Dahlias (I. D.). Incurved Cactus Dahlias (I. C.). Recurved and Straight Cactus Dahlias (R. C.). Semi-Cactus Dahlias (S. C.). Peony Dahlias (Peo.). Ball Dahlias (Ball). Show Dahlia (Show). Pom Pon Dahlias (Pom), and Miniatures (Min).

Abbreviation H. R. after Dahlia indicates an Honor Roll Dahlia.

1943

ROLL of HONOR DAHLIAS Achievement Medal Winners and Blue Ribbon Dahlias of Recent Introduction

ADIRONDACK SUNSET (Cackener-Parkway, 1935)

This aptly named variety has about everything a Dahlia can offer—color, form, personality, and splendid growing habits. The color is a brilliant scarlet red with golden tips, the center being tipped in golden orange.

Roots 65c

ADORABLE (I.D.) (Angell, 1935)

The color of this beauty is pinard yellow, outer petals flesh pink, and a prolific bloomer. Has a good stem and good growing habits. Scored 86 at the Storrs.

Roots 60c

A. E. HEIL, F. D. to I. D.

A large well built bloom, color purple, that is the best of its color in its classification. All who grew this last year were well pleased with its heavy insect proof foliage. A fool-proof Dahlia. Anyone can grow.

Roots 40c

AGNES FOSTER (Australia), I. D.

Here is a really large flower on strong stems, color clear pink, shaded orchid, with a deeper center. Grand champion at Karoonda Show. A fine strong plant that we liked very much.

Roots \$1.00

ALICE ADAMS (Australian), I. D.

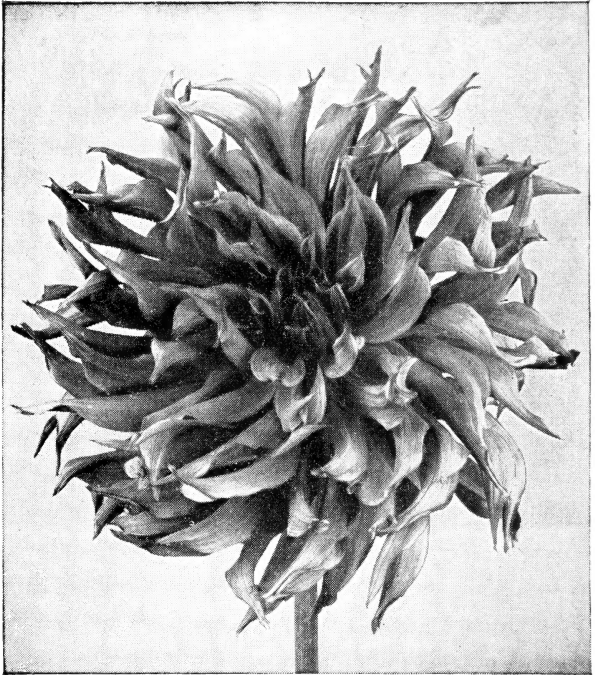
Old rose shaded gold. Beautiful variety with slightly pointed petals, 12 inch blooms. Strong branching plant. Highly recommended to us.

Roots \$1.25

ALICE McLEAN, (Lewis-Franklin, 1941), S.C.

The outstanding Dahlia of the North Western Pacific Coast and Winner of Two Achievement Medals. Color, rich dark marooned with lighter reverse. Plants grow medium height.

Plants 75c Roots \$1.85



All American

ALL AMERICAN, (Salem, 1941), Semi-Cac.

Color mulberry rose suffused salmon with wax yellow at base of petals. The petals twist somewhat and point in all directions. The bushes are six feet high and are covered with immense blooms which are held on straight stems. This is a very hardy variety. It won the American Home Achievement medal at Wisconsin State Show at Milwaukee; it was most outstanding specimen bloom at both Peekskill and Poughkeepsie; it was first. Semi-cactus at the Central States Show, and blue ribbon winner in several other shows.

Plants 70c Roots \$1.75

AMERICAN PURITY (J. Nuneviller, 1937), S. C.

A true semi-cactus; pure white; huge blooms 10 to 14 inches; straight stems; Achievement Medal winner in 1936. (H. R.)

Roots 50c

ANGIE V. F. D., 1943 (Robinson)

Bright scarlet in color, 8" to 9", forming almost a perfect ball. Insect resistant foliage; excellent keeper when cut. Winner of A.D.S. bronze medal and Sunset Magazine Gold Medal at Inglewood, Cal., in 1941. Best formal decorative seeding in Rockville Centre, N. Y., in 1942.

Plants \$5.00

APPLE BLOSSOM (B. & B.) I. D.

A true apple blossom pink. With a distinct rose bud center, a prolific flowering habit, and a blue ribbon winner at Chicago. Medium size flowers on fine stems. On J. W. Johnson's Honor Roll.

Roots 60c

AVIATRIX, (1940), I.D.

9-11 inch blooms of golden color with the center and tips varied with tinges of reddish-violet.

Roots \$1.25

Michigan Grown Roots

BAKER'S BEST — I. D., Baker (1943)

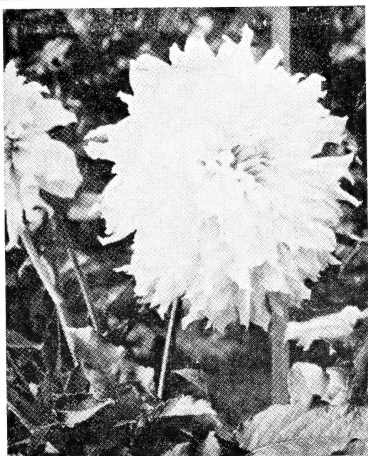
Very large, clear yellow. Good grower, good stems and good root maker.

Plants \$3.35

BALLEGO'S SURPRISE (Foreign) Cac.

This pure white Dahlia beats all existing white flowering varieties in the cactus class. Long, wavy petals. An early and prolific bloomer.

Roots 65c



BESS SMITH (Anderson) I. D., 1943

Winner Derrill Hart Medal in 1941, scoring 85 at 3 trial grounds. This large Pure White "A" type prize winning and Honor Roll Dahlia was the big sensation at the A.D.S. Trial Grounds in 1941, scoring a Certificate of Merit at Storrs, Conn., Cincinnati, Ohio, and Fairmount, W. Va., thereby winning the much coveted Derrill Hart Medal. It is pure white, with hardly a trace of cream or other tint. Its petals are wavy and placed close, making a thick petaled and pleasing form. Size average is about 8½ inches to 10½, depth 6 inches, with wiry 15-inch stems holding flowers on side. Bush is 5 feet tall with light green and very pest resistant foliage. It is an excellent keeper when cut and makes a superb basket Dahlia.

Plants \$7.50

BETTER TIMES (Stredwick, England) S. C.

Flowers on long, strong stems, color lilac pink, yellow center.

Roots 30c

BILL'S SPLENDOR, I. D. (S. D. G.) 1942

A deep tyrian pink, the most glowing and brightest of any pink dahlia we have ever grown. It grows 11 by 7 inches, actual measurement made by Lynn B. Dudley, past president A. D. S. The blooms are facing on long, straight stems. Bush growth about 6 feet, very hardy with dark, green foliage. A winner in the Open-to-All Class at New York. On all Honor Rolls excepting Dahlia Futurity Roll.

Plants \$1.50

BLUE RIVER, F. D.

Color as near to a blue Dahlia as we have ever seen.

Roots 60c

BRILLIANT LADY (Salem, 1939), I. D.

A bright reddish French purple reflexed silver. Many of the outer petals twist, showing the silver which adds to its attractiveness. Blooms are 11 to 12 inches and very deep, while the stems are extra long and straight. The bush is hardy, very clean growing and it reaches a height of six feet. We also won with this dahlia at Baltimore as the best I. D. Seedling.

Roots \$1.00

BROOMALL'S PINK (Broomall-Stephenson, 1937)

This is a Dahlia outstanding in color, a true rose pink and the heavy substance and texture of the petals give it a beautiful velvety appearance. It is semi-cactus in form and is easily grown 10 to 12 inches with good depth. Stems and foliage excellent.

Roots \$1.00

BURCH FORAKER (1938 Slocum) I. D.

Color sulphur yellow overcast scarlet. General color effect, bright scarlet. Good bloomer, held on good strong, straight stems. Good brancher and grower 5 to 7 feet high.

Roots 75c

CALIFORNIA IDOL (Ballay, 1935), I. D.

Another giant yellow with a coast-to-coast show record. Has been called the "yellow Murphy's Masterpiece". Color, true, clear glistening yellow, a true pastel shade and held on the best of stems.

Roots 40c

CAPT. CEDARQUIST, (Frank's Dahlia Gardens, 1941), Str. In. C.

A seedling of Miss Belgium but more superior in size, depth and form. A great prize winner under the 8-inch class. Color bright salmon orange, shading into a lighter tone at the tips. Long strong stems. First class cut-flower and exhibition variety. Winning two American Home Achievement Medals at Toledo and Wellsville Shows.

Plants 70c Roots \$1.75

CARL G. DAHL (Scott, 1938), I. D.

Color emberglow with golden sheen and a sweet brier reverse. Healthy bush; height about 5½ feet; insect resistant; blooms from early summer till frost; blooms 11 to 14 inches; a Dahlia to make you proud of your garden. Selected for the Honor Roll by J. W. Johnson.

Roots 65c

CAROLINA MAID, (Robens, 1940), I.D.

Mr. J. W. Johnston describes this one as, outer petals deep rose with salmon suffusion; the center is lemon yellow with deep rose tipping. Very large blooms on good strong stems. Plants about five feet high. On the House Beautiful Honor Roll and winner of a Certificate of Merit scoring 86 at East Lansing, Mich.

Plants 60c Roots \$1.50

CAVALCADE (Groll-Daliadel, 1935), F. D.

Bush 5½ feet. A fine variety that should have a real future. Cavalcade is a rich, deep rose with tones of rosy magenta. Best of stems.

Roots 25c

CHAMBERLAIN (S. D.) Certificate, Haarlem and Paris.

A beautiful combination of deep salmon with soft rose shades changing to violet. Stems are long and erect, regular formed blooms well out of the foliage. It holds full centers throughout the season and attains size from 12 to 15 inches. A very good keeper.

Roots 85c

CHARLES A. MASTICK, F. D. (Mastick)

Massive blooms of a true formal and very deep. The bushes are medium low but the deep apricot blooms are above the foliage on strong stems. Excellent keeper both on the bush and when cut.

Roots 65c

CHARLOTTE CALDWELL (Ball, 1937)

Orange shaded terra cotta.

Roots 35c

CHARLOTTE E. COLLIS, (1941) (Australian), I.D.

An unusual break in color which is a glorious orange flame, on the reverse. The petals are slightly rolled and twisted at the tips. Blooms are of an immense size on long strong stems and quite an acquisition for the garden or the exhibitor because of its impressive color.

Plants 80c

CHAUTAUQUA DAWN (Wallace, 1940), Cac.

A very worthy addition to the largest size exhibition cactus varieties. The blooms range from 9-in. to 11-in. The ground color is light yellow overlaid mallow pink, the center being mostly yellow. The effect is orange-pink and yellow. The flowers are facing to half erect on long, stiff stems, easily dis-budded. Free bloomer until frost. A very beautiful and artistic dahlia. Certificate of Merit at East Lansing.

Roots \$1.25

CHEMAR'S DAHLIAMUM (Chemar, 1940), I. D.

A striking new type of informal. Very similar to a huge Japanese Chrysanthemum. Color a bright Cadium apricot with a golden sheen. The extra long petals recurve to stem, forming a very deep flower which is held erect on long stiff stems, well above a large six-foot plant. Blooms average 12 inches by 10 inches. Even under ordinary field culture the centers are always full. Certified at the A. D. S. trial grounds with a score of 86 and notation, "We consider this a good dahlia." Also featured in Dudley's Honor Roll.

Roots \$1.00

CHEMAR'S PURE WHITE (Chemar, 1937) S. C.

This Dahlia, as the name implies, is pure white, very large and borne on good stems. We have a real treasure here.

Roots 40c

CHEROKEE BRAVE, Ricks, 1939, (I. D.)

Color, dark glowing carmine. Does not burn or fade. Long stiff stems hold the large blooms perfect. Good strong grower. Blooms last season 11 inches by 6.

Roots 75c

CHERRY CHEEKS, (England), Cactus

One of the lovely colors, yellow at center suffusing to salmon pink shades, with white at extreme tips.

Roots 75c

CITY OF BUFFALO (Wallace, 1940), I. D.

A real red dahlia. There are no adjectives to fully describe this reddest of all red dahlias. The blooms are 9-in. by 10-in. in diameter, facing on fine straight stems. The bushes are husky growers and insect resistant and produce great quantities of blooms. The clumps are large, easy to dig, and keep perfectly in storage. A large supply makes this price possible.

Roots 65c

CITY OF SAN GABRIEL (McIlhany, 1939, Deco.-Ball

Deco.-Ball—a fine bi-color light bronze, striped and splashed bright red. Fine for cutting, good stems.

Roots 25c

CLAIRE MORTIMER (Menssdorffer, 1939), I. D.

A clear warm light cyclamen-pink, without any lavender tone. The full, tight center is a deeper shade of the same color. Insect resistant, and the blooms are held erect on stiff but graceful stems. A first prize winner through the one, two and three year seedling stages, as well as for the best Dahlia in other shows.

Roots 85c

CLARA BARTON (Salem Dahlia Gardens, 1934), I. D.

An immense bloom facing slightly upwards on a long, straight stem. Face of petals silvery orchid, reverse of petals deep lavender; general effect lavender. Prolific bloomer.

Roots 35c

CLARA CARDER (Kemp, 1936), Dec.

One of the greatest pink decorative Dahlias we have ever grown. Its formation is on the border line between formal and informal decorative, and is in a color class by itself, it being a beautiful shade of clear Cyclamen pink, the only Dahlia we know of this color. The blooms are produced in the greatest profusion from early season until cut down by frost. (H. R.)

Roots 25c

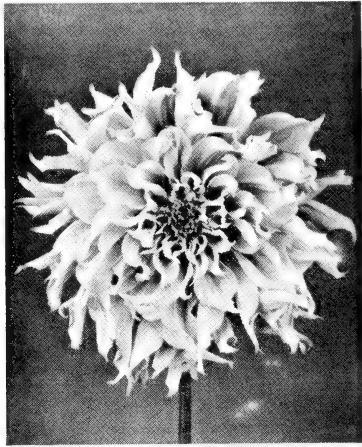
CLASS (Salem, 1941), F. D.

One of the largest sulphur yellow formal decorative dahlias to date. Grown up to 15 inches, petals fall back toward stem when fully out. Strong, straight stems hold flowers directly on top. Bush rugged.

Plants 80c Roots \$2.00



One view of planting of 4000 plants in the field.



COLIN KELLY, JR. I. D. (Salem.) Phlox-pink

A very large one, with blooms 12 inches or more with close disbudding. Stems are slender and long, holding flowers above bush. Bush height about 4 to 4½ feet generally. Advise use of potash with this one because in wet weather the stems have difficulty holding the big blooms. But it's worth while in spite of this.

Plants \$7.50

COLUMBIA, (Cuyahogo, 1942), S.C.

General effect orange, deep gold at center, peach pink on outer two-thirds of flower. Size 11½ by 7 inches. Won the Achievement Medal, as well as largest and most perfect bloom at Cleveland. All blooms in this exhibit over 12 by at least 9 inches deep. Won Achievement Medal at East Liverpool. It can be coaxed to unfold a mighty large bloom.

Plants \$2.00 Roots \$5.00

CONFUCIUS, (Ballay, 1941), Semi-Cac.

Chinese red Semi-Cactus of very distinctive appearance and of largest size. American Home Achievement Medal Winner at San Francisco.

Plants 80c Roots \$2.00

CONSUL GENERAL QUIST, S. C.

A beauty from Holland. Color, soft shell-pink, darker to the center, the edge of petals elegantly undulating, lends the flower a very lovely appearance. Large bloom well formed. H. R.

Roots \$1.00

CONVENTION CITY (Lee-Hulin, 1940), I. D.

Unusual coloring and splendid formation. A shade darker than Jasper pink, blending to carrot red at the tips. All petals veined light yellow. Free bloomer.

Roots \$1.00

CORNELL (Burgard, 1938) I. D.

New bi-color of garnet and white. Average size 8 to 9 inches, growing 5 to 6 feet high on strong stems. Listed on Leonard Barron's Honor Roll.

Roots 75c

CRACKER JACK (Dozier, 1939) S. C., I. D.

Rose to flame red, 9 to 10 inch exhibition flower of unique coloring and formation, the long petals curling and twisting and showing the pale tan reverse in a very attractive manner. An extremely prolific, early 'til late blooming dahlia. Highly praised by the judges as something different and worthwhile. On Honor Roll.

Roots 50c

CRINKLES, I. D., (Australian)

Beautifully formed blooms with slightly waved or crinkled at edge of petals with high center. Color, clean warm yellow-chrome. Large blooms. Achievement Medal at Burnley Test Gardens. Place of honor with highest points ever scored by a dahlia of any type. Grand Champion at Croyden and Victoria, Australia.

Plants 80c Roots \$2.50

Latest Honor Rolls Grown

CROYDON ACME, (Australian), I. D.

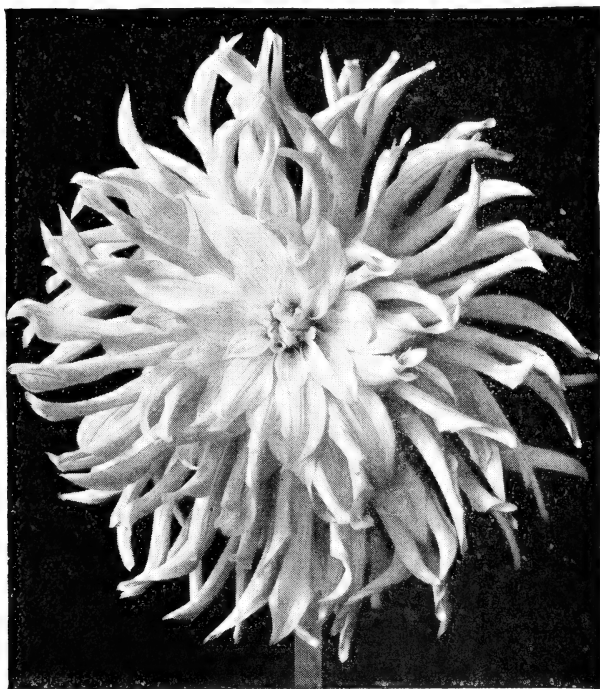
Here is another Australian "Grand Champion" that has been highly recommended to us. Most beautiful heliotrope pink. Large flowers and fine stems. A winner.

Plants 75c Roots \$1.75

CROYDON GLORY (Kemp, 1935), F. D.

Of the formation similar to Monmouth Queen, but of slightly different tone of yellow. Blooms are a little larger than Monmouth Queen. One of the best of the newer varieties. Fine grower.

Roots 60c



CROWNING GLORY (Salem, 1941), S. C. to I. C.

Color Amaranth pink with venetion pink center. Form semi-cactus changing to incurved cactus when fully developed. Size 10 by 7 inches and beautiful. Wonderful bloomer. Achievement Medal A. D. S. Show at World's Fair. H. R.

Plants \$1.50

CURLEY LOCKS (Chemar Creekside Dahlia Garden, 1937),

I. D.

Beautiful autumn tinted Dahlia that creates that admiration of all who see it. Long petals curl and twist and it is large and deep. Good stems, heavy foliage, tall grower.

Roots 65c

DADDY WALKER (Retzer); I. D.

A sport of Daddy Kemp. A most distinctive and attractive Dahlia with ground color a deep pink, heavily striped and dotted mahogany red. Bush vigorous, early bloomer and makes good roots.

Roots 65c

DARCY SAINSBURY, F. D., (Australian)

One of the finest whites we ever grew. This Dahlia came to us from Australia. This is a champion, without exaggerating. The immense blooms are erect on cane-like stems, facing sideways. Height of plants 4½ feet.

Roots 85c

DEAN SHURTLEFF (1942) I. D.

Semi-Cactus, very large brilliant Crimson shading to an Ox-blood Center. Stems are straight and stiff as steel—never droops, even in bud—9 to 13 inches to first leaf bracket. The finest I had in my 1942 garden. Also winner of Achievement Medal—Certificate of Merit and mentioned on three Honor Rolls.

Plants \$1.50 Roots \$5.00

DE MOLAY, (Dahliadel, 1941), F.D.

A rugged velvety crimson. Grows without forcing 9 by 5 inches and will grow larger. Strong erect stems with insect resistant foliage and good flower placement. Plant 4½ ft. Certificate winner at West Virginia Trial grounds in 1939 and on House Beautiful futurity for 1941.

Plants 60c Roots \$1.50

DEEP PURPLE (Stephenson, 1940), F. D.

Color deep magneta purple with a velvety sheen. Very large 12 inches by 7. Good grower; foliage dark and resistant. Stems strong and holds the flowers facing out.

Plants 60c Roots \$1.50

DIRECTOR M. A. HOWE (Paralls-Hulin Blamer, 1938), F. D.

Another of our very successful releases of the past year. Very large. Color Tyrian rose to cerise.

Roots 75c

DISCOVERY (Salem, 1937), I. D.

Deep rosy magenta with deep reddish garnet center. Many of the petals twist, showing a rose reverse. Very attractive in color. Bush of medium height; stems are strong. Excellent for forcing for the largest bloom class. Shown once against most of the big ones, winning first. Very fine in garden this season.

Roots 65c

DIXIE'S MASTERPIECE, (Dixie, 1942), I.D.

Color, crimson; blooms average 12 by 8 inches on a 6 ft. bush. You will quit growing other reds after you grow this one. An Honor Roll Dahlia.

Plants \$1.50

DOROTHY GEER—F. D. (Geer, 1942)

Beautiful light rose, pink at center, to a lighter tone at the tips of the petals — 7 to 10 inch blooms of good depth held on good stems above the bush. An Honor Roll Dahlia that has won a Certificate of Award, medals and many blue ribbons.

Plants \$1.50 Roots \$5.00

DOROTHY LAMOUR, (Ballay, 1941)

True orange straight cactus, exquisite form and color, sunset Medal Winner at San Francisco.

Roots \$1.25

DOROTHY MAE HERTEL, (1942), F.D.

Derrill Hart 1940 Gold Medal Winner. A deep shell pink on golden yellow base. Blooms 7½ by 10 inches diameter; 4½ by 7 inches deep. Healthy foliage; long strong stems. One of three Dahlias scoring highest average in three Trial Gardens. A.D.S. Certificate at East Lansing; score 87 E.

Plants 80c Roots \$4.00

DORIS ARLEEN (Hulin, 1940), I. D.

Here is a deep full informal pink. 8 to 9 inches held on wonderful stiff stems and gets better as season advances. It has won several Blue Ribbons and is a real gem in any collection.

Plants 60c Roots \$1.50

DREAM BEAUTY (Putnam, 1938), Deco.

Bi-color nice long, wide pointed petals of lavender purple, with white tip about ½ inch in length. Good strong plants and something new.

Roots 75c

DUKE OF WINDSOR, (Australian), L.D.

Blooms 11 x 6. This wonderful dahlia is undoubtedly the pick of the newer introductions. The color is best described as very solid dark red. A real champion.

Plants 60c Roots \$1.50

E. B. HUTCHINGS (Chappaqua, 1940), S. C.

Truly a lovely new dahlia, one of the most beautiful in this color class, due to its beautiful artistic form and color, mallow pink. Long narrow petals forming a huge graceful flower on perfect slender stems.

Roots \$1.25

EARL BALDWIN (England), S. C.

The flowers are very large and of beautiful formation, with florets twisting, curling and propeller-shaped. The ground color is flame, but this is almost covered by lilac, rose and purplish tints.

Roots 75c

Prize Winning Varieties

EDITH A. LEHMAN (Kemp, 1935)

Bloom ten by five, bush five feet. An introduction that is very favorably talked of and worthy of your trial. Color brilliant old rose with salmon suffusion. Stems strong, holding flowers well above the foliage. Petals are rather broad and heavy, giving the flower a rich appearance. (H.R.)

Roots 75c

EDITH WILLKIE — Tooker — S. C., 1942

The greatest white Dahlia of all time. Undefeated in three years of the toughest competition. A pure white semi-cactus Dahlia which grew 14 inches by 10 inches in the gardens this year.

Plants \$5.00

ELSIE SUTTON, C.

One of the most beautiful dahlias. It can be effectively staged with the largest of giants, rich canary yellow, overlaid with salmon-red, deepening to orange flame at center. The stems are perfect. From Australia.

Plants \$1.00

EMMA WALKER (Mac Dowell, 1939), S. C.

A very large flower that was good enough to win the American Home Achievement Medal. An early profuse flowering habit, splendid plant and stems. Color yellow shaded old rose with some lavender showing on tips of unopened petals. Very fine.

Roots 75c

ENTRUPS SULTAN (Foreign)

Deep carmine-red. Enormous flowers on long stems.

Roots 30c

EVELYN CHANDLER (Ballay, 1940), Semi-Cac.

Large bright gold of rare color. Selected and named by the guest of honor at San Francisco show after herself.

Roots \$1.00

EVERYBODY'S FAVORITE (Salem, 1939), I. D.

A rose Pink bloom without the faintest trace of lavender. It is very large and can easily be grown over a foot across. The petals fall back to the stems giving the bloom tremendous depth. The stem is good and the bush is very rugged, and it attains a height of six feet. Winner of the highest award in the seedling class in Detroit.

Roots \$1.00 net

EVENTIDE (Bissell, 1940), I. D.

Color rich deep purple. Comes almost to a formal in form at time. Has strong stems with flower facing side. Foliage dark and resistant. Won a certificate with score of 86 at East Lansing in 1938 where it scored highest score. Also won as seedling at Dahlia Society of Wisconsin show in 1939. Size

Roots \$1.25

EVENING STAR (1938), I. D.

Fine deep yellow and very fine for cutting, not large but good.

Roots 35c

FIREBALL (Bissell, 1937) F. D.

A brilliant scarlet which does not burn or fade. The foliage is heavy and absolutely insect-resistant. Received Certificate of Merit and on Honor Roll.

Roots 65c

FIRST LADY, 1942, I. D.

Yellow and orange; yellow at center with the body of the flower heavily shaded pinkish orange. A spectacular 12-inch bloom of fine form. Extra good plant growth with its exceptionally clean foliage. Blooms freely and early on the best of stems. Because of these qualities it is ideal as a large cut flower. Fifteen blooms of this won the Blue Ribbon at the San Francisco Show. A fine new Dahlia that will rank high.

Plants \$2.00

FOREST FIRE (Dahliadel, 1935), I. D.

The most "different" and for that reason the most distinctive of all the novelties. A brilliant scarlet flame with blushes of yellow; yellow petaloids.

Roots 40c

FRAU FRANCOIS NAGELS (Foreign), I. D. to S. C.

Medium sized flower held on good stiff stems. Color an odd shade of reddish maroon. Very good bloomer.

Roots 30c

FRECKLES (Kemp, 1937), I. D.

The ground color is a lemon-chrome, striped, blotched and speckled bright scarlet, irregularly distributed over the yellow ground color. Blooms up to 14 inches in width, and great depth, and was many times first prize winner in the bi-color classes in the 1936 Shows. The plant is a beautiful grower and a prolific bloomer.

Roots 65c

Edison's Dahlias

FROLICHE PFALS (Berger), S. C.

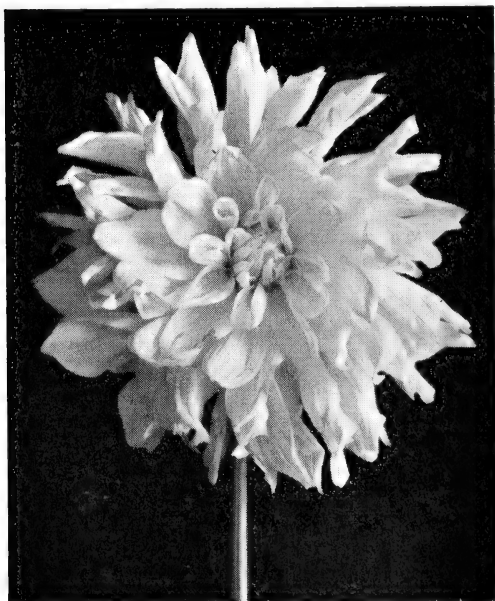
A very striking one. A light purple, tipped white. When it comes to sheer beauty, very few, if any, can rival it. The blooms are of good size and held facing sideways on good, strong, wiry stems, well above the foliage.

Roots 65c

GAY KNIGHT, I. D., (Australian)

Immense blooms, should be a bigger sensation than Murphey's Masterpiece as far as size, but the form of the bloom is much better. Red color, tipped orange toward ends of petals, with a scarlet reverse. Healthy grower. Stems very good. Exhibition variety in the large class. From Australia.

Plants 60c Roots \$1.50



GEO. O. WALLACE

GEO. O. WALLACE (1938), I. D.

This is, without doubt, one of the finest exhibition Dahlias ever originated and one that will be very hard to beat. The color is light yellow with reverse shaded white. Most blooms are erect, facing the sky. The center is high and always tight and every bloom is fit for the show table. The stems are always straight and strong, 15-22 inches to the first leaf. The bush growth is upright and about 6 feet tall. Flowers are long lasting when cut. They measure 12 by 6 inches under ordinary cultivation. Their form is exquisite, very few Dahlias so large have its utter lack of coarseness.

Roots \$1.25

GENE STRATTON PORTER (McIlhany, 1939), I. D.

A grand ruby red, Blooms 10 by 7 inches and a free bloomer.

Roots 85c

GERTRUDE LAWRENCE (Ballay, 1939), I. D.

Light cerise red held on long stiff stems way above the foliage. Can easily be grown 12 inches and free blooming. Achievement and gold medal winner.

Roots 85c

GILLMAN'S BEAUTY, F. D., (Australian)

Immense blooms of a delightful pink shade. Deep well-formed blooms on long, rigid stems. An outstanding Dahlia that should be in every exhibitor's collection. Australian variety. Won as best pink formal. Also won special award.

Roots \$1.25

GINGER ROGERS (Ruschmohr, 1941), I. D.

A very large light yellow with many 12 inch blooms and a certificate winner in two trial grounds. Blooms on long stiff stems held facing. H. R.

Plants \$1.00 Roots \$2.50

GLADYS SANDFORD (English, 1938)

A cross of Jane Cowl and Shirley Reed. Flowers are gigantic, held perfectly erect, rigid stems, 12 inch blooms of great depth freely produced with best of centers. Color pure bright yellow, outer petals heavily shaded apricot. Was a sensation in my gardens this season.

Roots 75c

GLAMOUR (Wm. Nunniviller, 1939), I. D.

An immense true purple with each petal edged Amaranth pink. Looks like a pink one in the show room. Long strong stems and has been grown to 14 inches. Winner at Cleveland and the American Home Achievement medal at Baltimore. One of the best Dahlias in our garden last year. Won many prizes in 1939.

Roots 85c

GOLDEN BEAUTY (Silvernale-Oakleigh, 1938), I. D.

Dahlia, and one which should be more widely grown. wards. Certificated at Storrs and East Lansing. A really fine to 14 inches. As the bloom advances the petals curl back-

Roots 75c

GOLD COMMISSIONER, (Schutte-Peck, 1942), F.D.

Size 5 x 12. Bush 5½ feet. This is the largest pure gold dahlia in existence today. Long black stems 15 inches to the first pair of leaves. Very prolific in both roots and flowers. This is the first real gold. There is no trace of any other color in the giant bloom. Bush growth healthy with broad heavy foliage. Honorable mention and runner-up for Achievement Medal in a hot seedling class at Indianapolis, Ind.

Plants \$1.50 Roots \$5.00

GOLDEN STANDARD (Downs, 1935), S. C.

Golden tan, brushed with tints of bronze and apricot. One of the most distinctive Dahlias of the year. Strong stiff stems hold flowers well.

Roots 30c

GOV. HEIL (Delwood, 1940), Cac.

A beautiful combination of color of orange and burnt orange towards the center, a free bloomer and good grower. Flowers 10 by 7 inches. Buds appear to be a purple cast.

Roots 50c

GOUVERNEUR VAN SONBEECK (Foreign), Dec.

One of the most popular exhibition varieties of Dutch origin. This new seedling of Jersey's Beauty has a fine light rose color; good stem and habit. Very fine in my 1941 garden.

Roots 65c

GRAND SLAM (Hulin, 1936)

A true Semi-Cactus of deep rose citron yellow and light pink. The 9 to 10-inch blooms are held on good stiff stems; insect-resistant foliage; height, 5 feet; floriferous; very attractive and winner of many prizes.

Roots 65c

GREATER GLORY (Salem, 1937), S. C.

Rose pink bloom of great size on extra long stems. Winner of eleven first prizes at National, Central States and other leading shows, also A. D. S. Medal. Good grower.

Roots 85c

GRETEL (Foreign), Str. C.

A novelty from Austria. The color is a bright henna, almost a bit red, and like varieties of this type can be grown to perfection for the exhibition hall.

Roots 40c

G. W. COOPER, F. D., (Foreign)

Purplish plum tinted rose, white tipped. Large exhibition variety; 7 to 9 inch blooms. Very good in 1941.

Roots \$1.25

HASLEROVER (Reed), I. D.

Bi-color, Grayish White background with rich royal purple dots and splashes.

Roots 50c

HAWKESBURY QUEEN (Australia), I. D. to S. C.

Very large flowers and a splendid plant. Color, wine red shaded darker. A prize winner that comes highly recommended.

Roots \$1.25

HILLCREST DAHL (Scott-Rist, 1939), I. D.

This beautiful rhodamine purple bleaches to mallow purple. Scored 85E in 1937. Blooms early of good size and good grower.

Roots 75c

HILLSIDE BEAUTY, (Bissell, 1941), I.C.

Color, rose doree with ochraceous orange at base of petal. It has a dark gold sheen on the face and purplish veining on the reverse. The petals twist and curl showing this reverse on the tips of the petals. Average size of bloom is 7 by 4. It made a Certificate of Merit at Storrs.

Plants 80c Roots \$2.00

HILLSIDE GOLD(Hillside, 1939), C.

Entered by Hillside Farm. Color light greenish-yellow to pale greenish-yellow. Very delicately tinted pale amaranth pink. General color appearance old gold. Flowers erect on straight stiff stems facing to side. Habit of growth bushy, dwarf.

Roots 60c

HILLSIDE JOY, (Bissell, 1941), S.C.

Color, apricot shading to solid gold at the center, ivory reverse. Size, without forcing, 9 by 4 inches. It is a very prolific bloomer and a good cut flower. The stems are long, straight and stiff. Two Certificates of Merit.

Plants 60c Roots \$1.50

HILTONIA APRICOT, F. D., (Australian)

A massive formal that can be grown to 12 inches and has great depth, stems are long and straight. Color, deep apricot with a lighter shading down the center. Solidly built flowers. From Australia.

Plants 60c Roots \$1.25

HI-SPEED (Workman, 1938), I. D.

A delightful new color (French Plum), vigorous grower, early, tall and free bloomer. Held on a good stem.

Roots 40c

HONEY DEW (Greenough, 1935), I. D.

Pink and cream combination of colors. A grand flower. Prolific bloomer on good stems, 8 to 10 inch bloom. Very attractive. Fine grower.

Roots 60c

HOUGHTON GEM, I. D.

An Australian origination. Color, rich creamy yellow shaded pink with deeper center on the best of stems. Can easily be grown 11 inches. Good exhibition variety.

Roots \$1.00

HULIN'S MELODY, (1942), S.C.

A Golden semi-cactus. The face of the petals gold, the reverse streakings of old rose. This color combination with a natural whirl of the petals makes it a truly outstanding Dahlia. Won First Prize as best semi-cactus at Tacoma, the same at Seattle 1941, and at the Western Washington Fair it got First as well as a Silver Cup, as a Sweepstake in the Seedling class of 31 entries.

Plants \$2.00

HUNT'S VELVET WONDER (Hunt-Burnett Bros.), I. D.

Has the distinction of receiving a special award of merit at the New York Show. It is an excellent keeper for so huge a flower. Color is rich, bright violet burgundy which under some lights looks royal purple.

Roots 40c

INCADESCENT (Weyers-Parella), I. D.

The color is rich rosy buff with a shading of yellow reverse light old rose. Scored 85 at East Lansing Trial Gardens. Large blooms on cane-like stems make this a real attraction.

Roots 40c

INDIAN GIANT (Emmons) I. D., 1943

Color tan or apricot, blooms many; 12 inches by 4 inches in depth. Short strong growing bush. Scored 85-E at East Lansing, 1941, and on the Honor Roll, 1942.

Plants \$5.00

INDIA NSUMMER — S. C., 1942 (Goetzger)

A golden yellow suffused soft orange, a new and beautiful shade in the semi-cactus, both out-of-doors and under artificial light. A tall, rugged grower with fine stems. Blooms 10 x 5 inches. This is a Dahlia that is not only of good size but has a beauty all its own. You will like it. On J. W. Johnston's House Beautiful, Futurity and Lynn Dudley's Flower Grower Honor Roll. Winner of American Home Achievement Medal at Washington, D. C. Also won the A.D.S. Medal for the best undisseminated Dahlia at Washington. Scored 85 at Cincinnati Trial Grounds.

Plants \$2.00 Roots \$5.00

IVAN MILLER, (Australian), F.D.

Unusual shade of red, nearly geranium red. Blooms 7 to 10 inches in size.

Plants 60c Roots \$1.50

JACK BENNY (Edison, 1937), I. D.

(By Special Permission)

Base color lemon yellow, out two-thirds of florets lightly tinted scarlet, giving the flower a bitter sweet orange color. Excellent stems from 4¼ to 15 inches; large flowers up to 12 inches, 3¼ to 4 inches in depth. Scored 85E at A. D. S. Trial Gardens, 1936. One of the best of its color now available.

Roots 75c

JEAN TRIMBEE (Trimbee), S. C.

New large, long petaled, thick flower of Petunia violet. Tall strong grower. Good stems. (H. R.)

Roots 40c

JEFFERSONIAN (Churn, 1939), I. D. to F. D.

Mauve pink large blooms. Easily grown 11 inches or more and good depth. Good stems and strong grower.

Roots 65c

JERSEY'S DAINTY (Waite)

Straight cactus. A lovely and very satisfactory Dahlia, white with a faint over-tone of pink. At times some of the flowers were pure white. The stem is fine, and it is a profuse bloomer.

Roots 35c

JIMMIE FOXX (Johnson, 1937)

A spectacular Dahlia of giant size, 13 in. by 8 in., held on long strong stems. Color, coppery red, tinged henna. Winner of many medals at largest shows. A strong grower.

Roots 50c

JONATHAN GILBERT, S. C., (England)

One of, if not the largest Dahlia we have, of the semi-Cactus type, quite equal in fact to the biggest giants. The florets are fairly broad at base, but decidedly pointed, or even sharp at tips, and are sickle-shaped and raking. Color, lovely tints of salmon and pink overlaying yellow, with yellow at center. Exhibition variety, from England.

Roots \$1.25

JOAN CRAIG (Chappaqua, 1940), I. D.

A very striking new Dahlia of rich color and fine form. Deep ox-blood red almost black at the center. The reverse is burgundy. The petals twist showing the reverse thus giving additional richness to the blooms. Good stems hold the flowers erect at all times. Bush growth is vigorous. Listed in the Dahlia Futurity 1840.

Roots 75c

JOSEPH B. LANKTREE — I. D., 1942 (Ballego)

Bright red without shadings; officially "turkey red." This great dahlia was produced by Mr. Bernard Dunn. It won the Achievement Medal at Alameda last year, and judged both in the showroom and garden it was also awarded a \$500.00 cash prize as the best new variety to originate in Alameda County through a 3-year period. All three blooms in the Achievement Medal entry were 13 to 14 inches in diameter by 7 to 8 inches in depth and it grew to similar size the past season. We believe it is one of the very best bright red decorative to date. With ordinary care it will provide many large blooms that are useful for all purposes.

Plants \$2.50

JOSEPH A. MCGINNIES (Wallace, 1940), I. D.

Deep, velvety, glowing, garnet red with black shadows. The blooms are of immense exhibition size on long straight stems. The rich coloring is even throughout the flower and is not streaked or spotted, even in hot sun. It is unusually insect resistant and is a heavy and continuous bloomer. The flowers are facing to erect. This dahlia is a great advancement in its color class.

Roots \$1.00

JULIUS C. BUNGE, I. C.

Small cactus from Holland of pure pink that for sheer beauty and appeal is outstanding.

Roots 60c

JULIA IRENE (Parella-Hulin) I. D.

A seeding of Kathleen Norris, but a much improved variety. Taller bushes, better stems, better qualities and a fine root producer. The color is rose pink with streaks of deeper pink. You will fall in love with Julia the minute you see her.

Roots 75c

KATHLEEN NORRIS (F. & M.), I. D.

The greatest pink Dahlia to date. Color a true rose pink, later deepening to mallow pink, but paler in the young central petals. Tall, strong grower. (H. R.)

Roots 35c

KATHLEEN V. SMITH (C.)

An English variety and one of the most beautiful cactus grown. Very fine habits and strong erect stems hold the large blooms above the foliage. Color is a lovely pure pink with a paler center. Ideal form, fine petals, and profuse blooming. One of the very best.

Roots 75c

KATIE-K (Koenig, 1938), I. D.

Bloom 11x6, bush 5½ feet. Color is a deep rose pink, with white veins in the petal that lighten the flower considerably. Scored a certificate of merit at both Storr's and East Lansing. Is on all the 1938 Honor Rolls. It is a giant.

Roots 85c



Three beauties left to right
Mrs. W. Keene—Massasoit—G. W. Cooper

KEMP'S GREAT EASTERN (1937), I. D.

This big fellow is one of the largest and most spectacular Dahlias. It can be easily grown to 14 inches in diameter, a depth of six inches and over. The color is a blending of orange-gold and reddish bronze, a beautiful color combination that reminds you of the various hues of the forest in late fall. A prolific bloomer from early season till cut down by frost. Good root maker, good keeper in storage. Scored 85E at East Lansing, Michigan Trial Grounds.

Roots 65c

KEMP'S MONARCH (Kemp, 1938), I. D.

Giant bloom of deep salmon, changing to orange chrome and lighter salmon when in full bloom. Petals cupped and rolled back, making the huge flower nearly ball shaped; 10 to 12 inches across, 7 inches deep, and held above the bush on strong stems.

Roots 50c

KEMP'S RADIANT BEAUTY (F D., 1939)

Beautiful large canary yellow, striped and dotted scarlet. Strong grower, free bloomer.

Roots 65c

KEMP'S RED CHALLENGER (Kemp, 1940), I. D.

Sensational red. A seedling from cross of Freckles and Murphy's Masterpiece and fine formation. Color is a brilliant carmine and blooms 11 by 5 are held well out of foliage on long, stiff stems. Plants medium height and a good brancher.

Roots 85c

KEMP'S RED PILOT (Kemp, 1939), I. D.

A grand red Dahlia. The color is very brilliant and a new red between carmine and Napal red. Free bloomer and a full centered flower held on slender stiff stems above the luxuriant dark green foliage. Grows up to 6 feet.

Roots 75c

KENTUCKY SPORTSMAN (White, 1938) I. D.

One of the finest and largest of the new bi-colors. Color, center lemon-yellow, outer 60 per cent of the petals a rich golden amber with old rose reverse and tipped white.

Roots 80c

Beginners' Collections

KILGORE'S IDOL, (Kilgore, 1941), F.D.

Color, citron yellow, clean and bright; ideal stem; strong bush with healthy habits, 6 feet high. Certificate of Merit, Storrs. On Honor Roll.

Plants 60c Roots \$1.50

KILGORE'S KING (Kilgore, 1938), I. D.

A magnificent flower of flesh outer petals, center gold. Petals long and pointed and held facing on cane-like stems 3 feet or more in length. Certificate at Storrs 1936. Plants 6 feet and foliage perfect. Has been grown 14 inches.

Roots 40c

KILGORE'S LUCIFER (Kilgore, 1940), Str. C. to I. C.

A large Brazil red Dahlia with capucine-orange reverse which shows as the petals curl. Blooms have been measured up to 12 inches by 8 deep and held on cane-like stems. Bushes strong, 6 feet high.

Plants 60c Roots \$1.25

KILGORE'S PURPLE, (Kilgore, 1940), I.D.

This purple is early at blooming, 10-inch blooms, long stems and 6 feet bushes. Petals show a crepe effect especially recommended for gardens that have a short growing season.

Roots 75c

KING ALFRED, I. D. (Seal)

Ruby red with a silver reverse. This 1936 introduction we consider one of the best of the new garden and exhibition varieties. The color of this very large flower is distinctive and beautiful and the habit of growth, foliage and stem are all very good.

Roots 40c

K. L. M. (Foreign), Semi-Cac.

A large yellow Miss Belgium with sane habits. Very fine cut flower.

Roots 50c

LEAH PEARL (Keiser, 1940) New Globe Form

A distinctive two-toned color effect of pink and cream. One of the coming new ones, for cutting and a good keeper. Won two Certificates. High score 86-1-C.

Roots 50c

LE'JOY (H. R., 1937), I. D.

Won first prize for best Informal Decorative and Sweepstake for best undesiminated Dahlia at Olympia. A rare new color very deep bluish orchid with many of the blooms tipped pure white, making a striking effect. Blooms are large, good depth, and stems are long and always perfectly erect. Very fine in 1938.

Roots 50c

LELAND STANFORD (Ballay, 1937), Dec.

Brilliant cardinal red, the Stanford University color. The best and brightest big red is the claim of the originator for this new introduction. The color does not fade in the least in very hot weather. Flowers large, early and free bloomer. Plant is of medium to tall, with strong stem stalks and good foliage.

Roots 50c

LINK'S BLUE TRIUMPH, (Link-Premier, 1941), F.D.

A bigger and better seedling of Blue River that has great size and grand color. Blooms 12 to 13 inches with ordinary field culture. The center is Petunia Violet that shades to light Phlox Purple petals. Long stiff stems. Award of Honor.

Plants 80c Roots \$1.75

LINK'S GORGEOUS, (Link-Premier, 1941), I.D.

Grows 11 x 7½ inches without forcing; can be grown much larger. A most gorgeous Dahlia of an unusual blend of shades and colors. The lower part of the broad petals being pale lemon yellow, the upper portion a bright shade of scarlet pink which also extends along the entire edge of the petals giving the blooms a most striking appearance. At a distance of twenty feet the general appearance is light pink. Many of the petals are deeply cut enhancing the beauty. Ideal stems hold the blooms facing. Foliage tough and insect resistant. Sturdy bushes grow 4½ to 5 ft. tall. Awarded a Certificate of Merit, under No.E-3138 at East Lansing, Mich., A. D. S. Trial grounds and runner-up for the Achievement Medal at Irvington.

Plants 80c Roots \$1.75

LILAC LAMBOURNE — England F. D.

Beautiful lilac-pink sport from the well known Lord Lambourne fine Dahlia. Selected for trial gardens at Wisley, England. Good stems, strong bush.

Plants 80c Roots \$1.75 Net

Edison's Dahlias

LORD OF AUTUMN (Almy, 1934), I. D.

A monster bloom declared by experts as one of the most wonderful yellow Dahlias yet produced. Grows 12 x 9 inches and the long pointed slightly twisted petals recurve until the stem is completely hidden eight or nine inches. Held on cane-like stems. (H. R.)

Roots 75c net

LOWELL THOMAS (Greubel, 1941), I. D.

A two-time Certificate of Merit winner. Giant new shell pink, Informal decorative. Easily grows to 12 inches. A sure winner.

Plants 70c Roots \$1.75

LOUISIANA RUMBA (Dozier) I. D., 1938

Large blooms of most unusual combination of beautiful scarlet red, striped and penciled with yellow, the center radiating yellow. Bush medium height, vigorous growing, many branches producing an abundance of fine flowers. Certificate of Merit at East Lansing, 1936, with top score of 86.6 and listed there as "an exhibition Dahlia of exceptional merit." Honor Roll.

Roots \$1.00

LYNN FONTANNE, (Parella-1941), S. C. to I. D.

Color, spectrum red shades of carmine red toward tips with chrome yellow petals, which soften the general color tone. A winner at two large shows and measured 13 by 9 at World's Fair A. D. S. Show 1941, on two Honor Rolls.

Plants 80c

MABEL ELIZABETH (1938) I. D.

Pure waxy-white of good size. Good grower and ree bloomer held on good stems.

Roots \$1.00

MAD. C. JUSSIANT, (Belgium), Inc. C.

A highly recommended cactus. Color is unique and a lovely pure light clear lilac violet. A great exhibition variety. Erect stems. Winner of three certificates. H.R.D.

Roots 75c



10-inch bloom of Mme. Jeanne in my 1941 garden

MMJ. JEANNE, (France, 1941), Dec.

A variety of large class of decorative type. Glazed violet color. A very large bloom that faces on a long stem. A very sturdy plant, vigorous and many flowers. Highly recommended to us. French variety.

Plants 60c Roots \$1.50

MAESTRO (Ballay, 1940), S. C.

Color a bright cerise. Very striking and reliable. A winner in seedling classes.

Plants 60c Roots \$1.25

MAFFIE (Cseckslovensky, 1940), S. C.

A huge intense red semi-cac., a great prize winner, has been grown up to 14 inches and 8 or 9 deep. Good strong stems.

Plants 60c Roots \$1.25

MAGIC PRINCE (Hulin-Parella, 1941), S. C.

Rosy Magenta with a lighter reverse, under surface has bands of amaranth pink. A very lovely dahlia held on long stiff stems. Bush tall and good brancher.

Plants 70c Roots \$1.75

MAID MARION, (Dozier 1941), I.D.

11-inch beautiful blend of amber yellow with tips shaded phlox pink, suffused with mauve. Prolific, unusual crisp and distinctive formation, long, strong stems, and fine keeping qualities. An improvement over "Frieda George." Achievement Medal winner at 1940 Wilmington and Baltimore Shows. On Johnston's Dahlia Futurity.

Plants \$1.00

MANHATTAN (VEILE, 1940) I.D.

Color vermilion-red with a capucine-orange reverse, which shows as a mixture of red and gold, as its pointed petals curve and twist. Size 11 to 12 inches across by 5 to 6 inches deep. Stems strong, holding flower on side. Won two cash awards as best seedling, first at Englewood, N. J., 1938, and Wilmington, Del., 1939. It won the A.D.S. Derrill Hart Gold Medal and the American Home Achievement Medal at the 1939 New York show. It is most artistic both in form and color.

Plants 70c Roots \$1.75

MARY LYNN DUDLEY, (Ruschmohr, 1941), I. D. to Semi-C.

Very velvety, outer rows between aster-purple and rose red inner rows nearest Bordeaux, center Dahlia purple with light streaks. Has been grown up to 12 inches and held on good stems.

Plants 70c Roots \$1.75

MARY TAYLOR (Taylor, 1940), Str. C.

Deep flesh ping and gold with all the points of a good Dahlia. Grows 9 by 4 inches. Held on fine stems. A good keeper. Bushes 6 feet. On Honor Roll. Achievement winner and scored at A. D. S. at East Lansing Trial Gardens.

Roots 85c

MAVIS TIERNEY, F.D.

Award of Merit at the Burnlet Test Gardens, Australia. A beautiful Dahlia that can be grown large easily. Color scarlet maroon, with very good stems and healthy foliage. Exhibition variety.

Plants 80c Roots \$2.00

MARION SMITH, (Geers-Australian, 1941), I. D.

This huge dahlia tyran pink overlaid mallow pink, making it nearly phlox pink. Blooms are clear bright and attractive not even coarse with blooms. 13 by 7. A must have Dahlia.

Plants \$1.25

MASSASOIT, (Messier, 1941), I.D.

A massive flower, blooms 9 to 12 inches, 5 to 7 inches deep, held on long stiff stems that hold the flowers right out of the bush. A grand deep pink.

Plants 80c Roots \$2.00

MAX BAER (Garrity, 1938), I. D.

Color is deep crimson with shadings of bright flame. Blooms 10 to 13 inches, depth 7 to 8 inches, extra good stems, free flowering, resistant foliage. Won first only time show, mentioned on J. W. Johnson's futurity list.

Roots 50c

MAY MARION DOZIER (Dozier, 1940), I. D.

A huge 11 to 14 inch clear yellow on fine long stems. Comes almost semi-cactus early and very broad petaled later. Certificate of Merit at Storrs, Conn., and East Lansing, Mich. On Honor Roll.

Roots 75c

MICHIGAN WHITE (Keiser-Lakeside) S. C.

The most prolific blooming cut flower white to date. Flowers run from 5 to 8 inches normally. As many as 18 to 25 opening at one time have been produced on one bush. Will bloom from July until frost, continuously shooting out long stems by the dozen. Certified at Storrs and East Lansing. Excellent root

Roots 65c

maker.

MILDRED POTE, F.D.

Winner Achievement Medal '37. Large, phlox-pink flower. Blooms set well on a good stem with a full center. Has nice clean foliage, a Dahlia anyone would enjoy growing. Medium size bush.

Roots 60c

MILTON J. CROSS (Johnson, 1936), I. D.

An immense flower of rich yellow-buff, the outer petals flushed with rosy amber. Winner of five firsts, including three Achievement Medals. Long stiff stems; good grower.

Roots 50c

EDISON'S 1943

BIG BARGAIN ROOT COLLECTIONS

COLLECTION 1 FOR BEGINNERS — 8 COLLECTIONS OF \$1.00 EACH

R-1-A

Calif. Idol
Kilgore's King
Incandescent
Thos. A. Edison
Clara Carder

R-1-B

Clara Carder
Hunts Velvet Wonder
Monarch of the East
Red Sunset
H. R. S.

R-1-C

Arelida Lloyd
Clara Barton
Red Jug
Yankee Gold
Elinor Radell

R-1-D

Charlotte Caldwell
City of San Gabriel
Evening Star
Sally B
Mrs. Geo. LeBoutillier

R-1-E

Cavalcade
Girl of Hillcrest
Ruby Taylor
Twilight
White Wonder

R-1-F (Cactus)

Frau Frances Nagels
Golden Standard
Gretel
Miss Glory
Vlammenspiel

R-1-G (Min)

Buckeye Baby
Cottage Maid
Dickie Moore
Fairy
Verity Wadsworth

R-1-H (Pams)

Betty Ann
Chickie
Coral Glow
Sherry
Golden Queen
Snow Clad

SPECIAL COLLECTION R-2

Carl Dahl
Cracker Jack
Gov. Heil
Leah Pearl

Mrs. Wm. Knudsen
Purple Omar Khayyam
Jimmie Fox
Kemp's Monarch

Mildred Pote
Wm. J. Wylie
September Morn
King Alfred

Miss Ontario
Sunrays
Sunlite
Rory Dawn

Your pick of any 5 varieties \$2.00; any 10 at \$3.75; all 16 at \$6.00

SPECIAL COLLECTION R-3

Coll. 3-A

City of Buffalo
Greater Glory
Carl Dahl
Kemp's Radiant Beauty
Victory
Your Lucky Star

Coll. 3-B

Burch Foraker
Cherry Cheeks
Dream Beauty
Kemp's Great Eastern
Rosy Dawn
White Winner

Coll. 3-C

Cherokee Brave
Clair Mortimer
Joan Craig
Mary Taylor
Kilgore's Purple
Volcano

Coll. 3-D

Emma Walker
Earl Baldwin
Edith Lehman
Jeffersonian
San Francisco
Spotlight

Any 1 Collection at \$3.20; any 2 collections at \$6.00; any 3, \$8.75; all 4, \$11.75.

SUPER ROOT COLLECTION R-4

R-4-A

Evelyn Chandler
Rita Wells
Silverton
G. W. Cooper
Maffie

R-4-B

Jos. McGinnies
Norma Morton
Wotana
Chautauqua Dawn
Penn Star

R-4-C

Kemp's Red Challenger
Silver Lady
Dorothy Lamour
Pride of Norfolk
Alice Adams

R-4-D

Pink Giant
Rebellion
Hawksbury Queen
Kilgore's Lucifer
Vin-Well Empress

Any 1 Collection at \$3.75; any 2 at \$7.25; any 3 at \$10.50; all 20 roots only \$14.00.

SUPER GIANTS ROOT COLLECTION R-5

R-5-A

Carrollia Maid
Hiltona Apricot
Alice McLean
Trojan
Link's Blue Triumph

R-5-B

DeMolay
Mrs. William Keene
Vin-Well Crinkles
Ruth Nichols
Mary Lynn Dudley

R-5-C

Kilgore's Idol
Powerhouse
All American
Hillside Joy
Massasoit

R-5-D

Maffie
Link's Gorgeous
Lowell Thomas
Magic Prince
Royalty

Any 1 collection \$6.00; any 2 lots \$11.50; all 3 lots \$17.00; all 20 roots \$20.00 with Free root added.

NOTE:— See the December, 1942, number of The Flower Grower for two Super Root Collections F-1 and F-2.

COLLECTION ROOT NOTE:— When ordering these collections, suggest at least one substitute, as we may be sold out of some variety ordered and have to substitute with one of equal or of more value.

ROOT NOTE:— In the shipping of roots especially early in the season we try to send roots showing eye or spot where eye is indicated, but some eyes will not develop even then and we will gladly replace when notified. All growers have the same trouble. As I get roots, I pay \$10.00 to \$25.00 each, and if they fail to eye, I return them for replacement. Roots should not be planted in wet, cold ground as they will rot even if eyed. They will grow a lot faster when the soil has warmed up.

FOR PLANT COLLECTIONS SEE PAGE 40

Edison's Dahlias

MISS GLORY (Ballay's Success, 1936, S. C.)

Apricot yellow, bearing some resemblance to Satan but has finer petalage and is more incurved, massive size yet extremely refined flower and free bloomer with perfect stems. Outstanding Dahlia at Storrs in 1935. Score 86 and H. R.

Roots 40c

MISS OAKLAND, F. D.

Pure white. Vigorous, free blooming cut-flower Dahlia.

Roots 65c

MISS ONTARIO, (Show)

Fine large deep pink Dahlia with a strong stem.

Roots 50c

MISS PARKERSBURG (1938), I. D.

Color, a buff, back of petals carrot red, with some tones of jasper red to flesh color. A large, full centered flower.

Roots 75c

MISS PITTSBURGH, (Ripper-1941), Straight Cac

Color, rose shading to shell pink, with a darker center. Size of flower, 5 to 7 inches. Depth of flower, 2 to 4 inches. Born on straight, strong, erect stems and has mid-season blooming habits. Blossoms will withstand the sun and rain above average, and have good keeping qualities. Average height of plant about 4 ft., has heavy dark green foliage, which ably resists the attack of the leaf hopper. Won first prize two years at Pittsburg Show in seedling class. Scored 83—A. D. S. Trial Grounds at Storrs.

Plants 60c Roots \$1.50

MOLLIE B., (Briggs-Ruschmohr, 1942), I.D.

Color tyrian pink with flush of amaranth pink. Nice form with large flowers on strong cane-like stems. Size disbudded 12 inches by 6 inches deep. Won American Home Achievement Medal at New York. Bush height 4½ feet.

Plants \$2.00

MONARCH OF THE EAST (Almy, 1938)

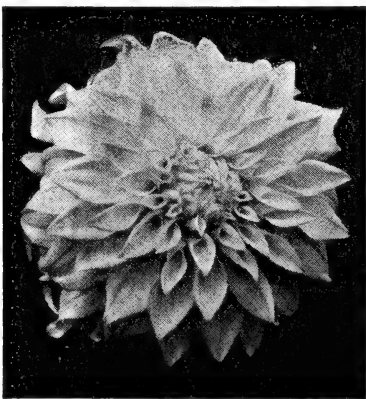
Color warm gold with apricot and orange buff suffusion; slightly coppery red on reverse. Grand stem up to 4 feet; holds giant flower about bush. Size 12 to 14 inch blooms and fine for exhibition. H. R. and Certificate winner.

Roots 40c

MOONBIA, (Foreign), S.C.

Medium to large blooms of peach pink and gold; good stems and bush.

Plants 70c Roots \$1.75



MOON GODDESS (Dozier, 1943) F. D. — I. D.

11 and 12 inch primrose yellow on extra long, strong stems. Pure formal early and later opens into beautiful, huge informal decorative. Has a large, round center that never stops unfolding. Gold Medal winner as two-year-old. Achievement Medal winner at Washington and outstanding. On the Flower Grower Honor Roll.

Plants \$6.00

50 Varieties of Miniatures

MRS. GEORGE LE BOUTILLIER (Smith-Ruschmohr, 1935), I. D.

A he man's flower everyone likes. Is a bright carmine red, shading to a rich cardinal red at the center, with full petal and deep flower. The average diameter of this Dahlia is 10 inches. (H. R.)

Roots 25c

MRS. GEORGE SAWYER (Pezant), C.

Originator's description "le dahlia chysantheme." Exceptional variety. Large with narrow petals, recurving back to stem, which is long and rigid. Color a beautiful soft rose with reverse of silver.

Roots \$1.25

MRS. WM. S. KNUDSEN (Dixie, 1938), I. D.

A pure white that will be hard to beat as it already has a fine record as a prize winner; exhibited 4 times in the undis-seminated classes it was 4 times a winner; Detroit, Toledo, Indianapolis and Chicago. Can be grown to 12 inch blooms without forcing; sturdy bushes grow 6 to 7 feet tall. On Mr. Barron's Honor Roll; Certificate winner at East Lansing.

Roots 50c

MRS. W. KEENE, (Australian), I.D.

Exceptionally fine Dahlia something like California Idol with the same great depth but is much superior to California Idol both in form and color. Color primrose flushed apricot-flesh. Good grower and long stiff stems.

Plants 60c Roots \$1.50

MURPHY'S MASTERPIECE (Murphy & Reed, 1932), I. D.

Immense dark red that can be grown to 15 inches and a great prize winner. (H. R.)

Roots 60c

NAGELS GIANT, (Foreign), I.D.

Sensational immense Dahlia of most delightful form, is one of the largest. Grown to 14 inches. Color rich salmon with gold. Good erect stems. Extra for exhibitions. Certificate of Merit H.R.D.

Roots 75c net

NANCY GENE, (Australia), I.D.

Truly a find and a gem. Huge graceful flowers, perfect foliage and stems. Color clear, rich, deep yellow of one tone. A very vigorous variety that will go far. The best yellow we have seen. Extra and very scarce.

Roots \$1.00

NANCY ANN MITCHELL (Mitchell-Ruschmohr, 1940), S. C

Color true, vivid scarlet with buff reverse which shows with revolution of petals. This one was a bright spot in the garden and attracted a lot of attention. Profuse bloomer, well rounded growth. Foliage fine cut in keeping with bloom. It is true to form and keeps well when cut. Nice for arrangements and baskets. Size 7 inches.

Roots \$1.00

NORMA MORTON, I. D. (Australian)

A magnificent variety, color yellow flushed garnet. A huge informal of excellent exhibition qualities with good garden habits.

Roots \$1.00

OAKLAND BEAUTY, (1940), F.D.

A fine new white, 5 to 8 inch blooms held on good straight stiff stems.

Roots \$1.00

"OCTOBER" I. D. (Taylor, 1943)

Color — gold and peach pink, with reverse of rose and purple. A Dahlia that can be shown in either pink or autumn colored classes. Size 11 inches x 6 inches and larger with very long and straight stems that will not droop. Winner as best pink Dahlia in Fairmount, W. Va. State Show, 1941. H-R.

Plants \$6.00

ONE-GRAND, (Stephenson, 1938)

A semi-cactus of brilliant canary yellow color. An honor roll Dahlia. A 12 inch bloom on the best of stems and a splendid keeper. Pronounced by growers who have visited the gardens, "The best commercial yellow to date."

Roots 55c

ORMOSED, S.C.

A new Dutch novelty with curled petals having a deep violet color and silvery white center. Strong long erect stems and free bloomer. Exhibition and cut flowers. A successful Dahlia. H.R.D.

Roots 75c

PACIFICA (Ballay, 1940), S. C.

Odd shade of light saffron-yellow; reverse of petals somewhat lighter. Much admired at the San Francisco show where it won as the best undis-seminated semi-cactus.

Plants \$1.00

Edison's Dahlias

PEARL HARBOR, I. D., 1943, Dixie D. G.

An 8 inch to 10 inch flower that rolls back to the stem. A rosy lavender, flecked and splashed dark purple, which appears blood red. Named in memory of the tragedy at Pearl Harbor — American's rosy spot, which splattered with blood on December 7.

Plants \$5.00

PEACE, (Scotland), S.C. to Inc.

A lovely variety that goes well with Julius Bunge and is similar in form, Semi-Cactus to Incurved. Color Martius Yellow and Sea Shell Pink; size 5½ by 4 inches. Stem and foliage excellent. Grows 4½ to 5 feet tall.

Plants \$1.00

PENN STAR, (Greubel, 1941), F. D.

Rodamine purple tipped white entirely different from any previous introductions. Blooms 6-8 inch. Flowers facing to half facing. Good stems, bush 4½ to 5 ft. Attractive foliage. Blue ribbon winner at Pittsburg, Pa. Show and won Certificate at East Lansing in 1939. Fine keepers when cut.

Roots \$1.25

PEPPERMINT CANDY, S. C.

Long creamy white petals with many stripes and splashes of crimson. Good size and very unusual.

Roots 30c

PINK GIANT, (Bruidgom-Mad River Gardens), I.D. to S.C.

Certainly one of the most beautiful of the new Dahlias. A four Honor Roll Dahlia. Very large flowers of clear, pure pink, with the same color as Julius C. Bunge. Perfect long stems, and a splendid vigorous plant, 4½ to 5 feet. Don't miss this one.

Roots \$1.00

PINK PROFUSION, (Cordes-Dahliadel, 1942), F.D. to I.D.

Salmon-pink edged deep rose-pink, with cream at center when mature. Perfect center. Size 7 by 4 inches. Bush 4½ feet. Excellent keeper. Long stems. Since Jersey Beauty, we have not had a pink like it and it differs from that favorite.

Plants \$2.00 Roots \$6.00

PINK AMELIA (Edison, 1940), S. C.

Scored 85.2 at Mid-West trial gardens at East Lansing, Michigan. Color: fine glowing pink. Flowering habit fair. First bloom September 1. Stem 10 to 14 inches, straight erect. Habit of growth, erect branching. Health good. Flower 6 to 12 inches, depth 4½ to 6 inches. Height of plants 4½ feet, 6 foot spread. On the Flower Grower Honor Roll. Some commercial growers have written me it is one of the finest they ever grew.

Roots \$1.25

POWERHOUSE, (Dozier, 1941), I.D.

Huge blossoms of raspberry red with distinctive white striping. Good bush, fine strong stiff stems.

Plants 60c Roots \$1.50

PREMIER'S "WINSOME" (1939), I. D.

The most attractive pink I. D. since Kathleen Norris and easy to grow giving massive blooms in great abundance, will grow to 11 x 6 inches without any forcing, stems slender but very strong, heavy foliage that is resistant to insects and mildew. Certified at East Lansing this year with a score of 85.2.

Roots 85c

PREMIER'S MAJESTIC (No. 35-2)

Certificate winner at 3 trial gardens. A large informal decorative of a beautiful new color combination; Salmon, Gold and Mulberry; a profuse bloomer of large deep flowers having cane-like stems; foliage hard and insect resistant.

Roots 55c

PRIDE OF AUSTINBURG (Strassen, 1936), I. D.

A giant informal decorative. Color, a grenadine pink suffused light yellow. Center and reverse rich rose. Strong, open plant growth, with long cane-like stems, requiring a minimum of disbudding. A profuse bloomer. Certificates of merit at both East Lansing and Storrs. Highest score 87, of all Dahlias at Storrs in 1935. (H. R.)

Roots 50c

PRIDE OF NORFOLK, (1941)

A large shell pink fading to lighter tones at the edges. One of the largest 12 inch blooms common. Scored 87 at East Lansing Trial Grounds.

Plants 60c Roots \$1.50

PURPLE OMAR KHAYYAM, (Wallace, 1940), I. D.

As the name implies this dahlia is a sport of the very popular Omar Khayyam. The color is rosy purple, shading lighter at the tips of the petals. In everything but color it is identical to Omar Khayyam. The blooms are very beautiful and the color is thoroughly fixed.

Roots 60c

REBELLION, S. C.

Color deep rich plum, lighter at the tips. Flowers particularly compact, solid and round, being composed of numerous pointed petals. Plants strong and flower freely on good stems. Good exhibition variety. From England.

Roots \$1.00

RED JUG (Preas-Ruschmohr, 1935), I. C. or S. C.

This remarkable brilliant crimson or cardinal red Dahlia with yellow tips has wonderful keeping qualities and cane-stiff stems that hold the flowers perfectly facing. Foliage is insect-resistant. Won many prizes. Certified at Storrs, 1935.

Roots 30c

RED MENACE, I. D.

One of the newer introductions and one of the best. Color deep, dark red. We enjoyed this Dahlia last year and you will

Roots 50c

RED SUNSET (Robens, 1938), I. D.

Bright vivid scarlet. Long stems. Healthy, vigorous grower. Good root maker. Beautiful foliage. Exhibition type in size and color. Received score of 85E at Mid West Trial Grounds, Lansing, Michigan. Stock limited.

Roots 40c

REGALIA — I. Cac. Ballay, 1942

Bright cerise with a lighter reverse. A fine-petaled cactus that will serve a very desirable purpose. It is a welcome addition in the class with such varieties as Golden Standard and Gala California. Blooms are of good size for this type and have perfect placement on the stems which are strong and long. A lavish bloomer through the whole season.

Plants \$1.50

RITA WELLS (Wells Straight, 1939)

A very large Dahlia. Informal Decorative to semi-cactus. Grenadine-pink on buff. Achievement Medal winner. Certificate of Merit at Fairmont, W. Va.

Roots \$1.00

RITA BETTY, (Australian), I. D.

A very fine Dahlia of cinnamon and henna shades. The large blooms are carried on first class stems. Winner of several Championships. Highly recommended to us.

Plants 60c Roots \$1.50

ROMEO (Ballay, 1936), I. D.

Brightest scarlet, a color as appealing as the red, red rose. The form of the flower also is particularly attractive and adds much to its beauty. First-class red and is of good size and very satisfactory.

Roots 30c

ROSE MARIE, (Comstock, 1941), F. D.

An unusual shade of pink hard to describe, a seedling of Kathleen Norris with blooms averaging 10 inches. Plant 5 feet. Should not be confused with the Australian variety of some years ago. H. R.

Plants \$1.00 Roots \$2.50

ROSY DAWN, (Dixie, 1942)

Ball 4 inches, golden yellow, tipped and heavily edged rose bush. Scored 85.5 C at East Lansing.

with a red center. An attractive flower held well out of a 5-foot

Roots \$1.00

ROSY MORN (1938), I. D.

New color in Dahlias. Brilliant rose pink. Perfect growing habits, a great Dahlia that is a sure winner. Won Achievement Medal at the Baltimore show.

Roots 85c

ROYALTY, (Dozier, 1941), I.D.

Rich Burgundy Wine in color, huge blooms on cane-like stems Very vigorous bush. A grand variety. H.R.

Plants 60c Roots \$1.50

Edison's Dahlias

ROYAL OAK, Dec. (England, 1942)

A monster massive giant Decorative made up of broad, perfectly reflexed, but curly petals which form a most pleasing flower. Color yellow, deeper at center. Great flower stems. A veritable Goliath. Mr. Stredwick's best.

Plants \$1.50

RUBY TAYLOR (Garrity, 1932), I. D.

An open growing bush and needs no pruning to produce large deep flowers. Clear self color of carmine shade. Awarded a Certificate of Merit at Storrs in 1932. Winner of no less than six first prizes on the Pacific Coast.

Roots 40c

RUTH NICHOLS, (Sowton-Mad River, 1941), F.D.

No doubt one of the finest new Dahlias of 1941. A sure winner in its color class. A lavender formal that should defeat Blue River on the show table. Vigorous rugged plants with long strong stems holding all flowers facing, or on top. Color a lively shade of Amaranth pink, with a phlox purple tinge, giving a lavender appearance. High scorer and fine for exhibition.

Plants 75c Roots \$1.75

many moons. A worthy introduction of a well-known grower 12 inch blooms in my garden in 1939.

SAN FRANCISCO (Ballay, 1939), I. D.

A gorgeous shrimp-pink. An extra large flower on extra long strong stems. One of the finest pink Dahlias I have seen in

Roots 85c

SALLY B. (Almy, 1933), I. D.

One of the beautiful pinks I grew last year and there are many new ones. Seedling of Kathleen Norris and has the same long black stiff stems. Stands facing you. Large perfect flower.

Roots 30c

SCARLET O'HARA, (Salem, 1942), I.D.

Scarlet with buff orange reverse. Outer petals twist showing both colors. Truly immense.

Plants \$1.50

SEASON'S BEST, (Schutte, 1942), S.C.

Bloom 6 by 12 inches. Bush 5 feet. Here is a pink that will be unbeatable in the pink semi-cactus. A beautiful clear peach pink. Shown only once this year, it won the American Home Achievement at Indianapolis, Ind. A very beautiful artistic flower. Blooms when cut keep 5 days or more in perfect condition. Stems long and straight, very prolific.

Plants \$1.50

SEPTEMBER MORN (Hines), F. D.

1938 introduction and perhaps the newest color introduced in years. Has won repeatedly. Bush low with dark, blue foliage. Color is best described as a deep, glowing orange. We advise every Dahlia grower to grow at least one plant. A real winner.

Roots 60c

SILVER LADY (Hillside, 1940), F. D.

White lightly edged and flushed with lavender. A fine open grower with fine stems. Very appealing to those who like pastel shades. Received certificate at Fairmount Trial Grounds in 1938, also listed in House Beautiful Futurity.

Roots \$1.00

SILVERTON, (Kemp, 1941), F. D. to I. D.

This dahlia is of an unusual color, in fact we know of no other just like it. In color it is silvery seashell pink, with light buff shading in the center of the bloom. Blooms are 8 to 9 inches in diameter, full centered, of good depth and are held well out of the foliage on rigid stems. Plant is healthy and rugged, and very prolific of bloom. An unusual color and will surely give you satisfaction in all respects.

Roots \$1.00

SON OF SATAN (Slocum, 1937)

An immense incurved cactus flame red with excellent stems. This sensational four Honor Roll Dahlia is the strongest and most vigorous grower in our collection. The flowers are large and attractive.

Roots 55c

SOU. de ROGER MOULIN, (France, 1941), C.

Cream shading apricot pink, 7-inch bloom and good stems.

Roots \$1.50

SOUTHERN THOROUGHbred, S. C. (Dozier, 1943)

Sensational giant mauve lavender, 12-15½ inch field grown. Largest and best in show at Cleveland and Chagrin Falls. Largest and best semi-cactus at East Liverpool. Achievement Medal Winner at Wellsville, Ohio. On the Flower Grower Honor Roll.

Plants \$6.00

STOPLIGHT, F. D. to I. D.

A bright scarlet, color of the President Canna. I believe it is the brightest red of all red Dahlias. It can be grown very large with great depth. A strong grower, good root maker. It stopped them all at the W. Va. Trial Grounds where it was named. Awarded Certificate of Merit at W. Va.

Roots 65c

STEPHEN FOSTER, (Salem, 1942), I.C.

Buff orange and tyrian rose of large size. Very hardy. Winner of four Achievement Medals, two A.D.S. Medals besides many other specials and blue ribbons.

Plants \$2.00 Roots \$6.00

SUNRAYS (Straight-Wells, 1938), I. D.

Giant blooms of great depth and substance. The color is bright buff with apricot suffusion. Extra fine in my gardens in 1939. Long strong stems.

Roots 60c

SUNLITE, (Lee-Tyron, 1940), Semi-cactus

A fine petaled semi-cactus that would be classed as a cactus by some growers. Color is a clear lemon yellow, blooms 8 to 9 inches by 5 inches deep, extra long stems that hold the blooms perfectly. A prolific bloomer and a good keeper. Won first prize at Washington Dahlia Society Show and Capitol Dahlia Society Show in 1937 and was not entered for competition since.

Roots 50c

SYMPHONY, I. D. (Dozier, 1941)

Ten inch pink-toned lavender. A Dahlia as beautiful as its name. Very prolific.

Plants 80c

SYDNEY, (Geer-New Zealand, 1942), I.D.

9 to 11 inches. A beautiful rose pink with a tinge of gold at base of petals.

Plants \$1.25 Roots \$4.50

THE GOVERNOR, (Berwick-Dahliadel, 1940)

A clear sulphur-yellow formal decorative. It has beautiful formation with wide rolled-back petals. Grows easily 11 inches by 6 inches, with long erect stems. Bush about 5 feet tall. A long season bloomer. It blooms from mid-July to frost. On the Honor Rolls.

Roots \$1.00

THOS. A. EDISON (Dahliadel, 1931), F. D.

A wonderful Dahlia of stag horn petalled formation and a gorgeous ravs purple color. Very attractive and good bloomer. Fine stiff stems.

Roots 30c

THOS. J. O'CONNOR, 1940), I. D.

Fine large coppery red to orange red with reverse of cream and held on good strong stems. Blooms 8 to 10 inches and of good depth. Bush strong.

Roots 60c

TOP-FLIGHT, (Dozier, 1942), S.C.

11-inch bright blood red of perfect formation, facing just right on extra long, strong stems. Most vigorous grower. Fade-proof in hottest summer on record. Gold Certificate of Merit at 1940 Washington Show. Achievement Medal winner at Boston, Wilmington and Richmond and runner-up at Baltimore. \$25.00 cash award as best in Show at Richmond. On Futurity and all honor rolls.

Plants \$1.50 Roots \$5.00

TOPS, (Dozier, 1942), I.D.

11½ — 12 by 7 inches beautiful clear, rich yellow of crisp formation on strongest stems; the outstanding yellow. Gold Certificate of Merit at Washington. Medal winner as a one, two and three-year-old. Achievement Medal winner at Chicago. All honor rolls.

Plants \$1.50

TOWN TOPIC (Hulin-Parella, 1940), F. D.

A bi-color deep pansy purple with small white tips. 9 to 10 inch bloom held high above foliage on good stiff stems. The blooms vary same as most bi-color and have some solid colored ones. Fine when cut and good keeper. Also very compact and attractive.

Roots \$1.00

TROJAN, (Salem, 1941), I. D.

Here is one that many say is a super dahlia. It is immense in size and the blooms have long and straight stems and are produced in profusion. The bush is of medium height and very hardy. In color the bloom is crimson red overlaid wax yellow with the yellow more pronounced on reverse of petals. Trojan won the American Home Achievement Medal at Liverpool, Ohio, by the unanimous vote of the judges.

Plants 80c Roots \$2.00

VELVET KING, (Bissell, 1942), I.D.

A dark velvety cardinal. Size 10 by 7. Bush growth medium tall, with dark heavy foliage. H.R.

Plants \$1.50 Roots \$3.75

VICTORY (Asther, 1940)

Is called a salmon-pink by the originator. It has a long stem and the flower is held well above the bush. There are not many in this pink formal class and this one should be a competitor to those we now have. The blooms I saw were nine inches in diameter. The bush height is about 4½ feet.

Roots 85c

VIN WELL BLUE BIRD (Blamer, 1936), F. D.

Beautiful blue purple color. Medium size and good stems. Very perfect decorative.

Roots 30c

VIN WELL CRINKLES, I. D., 1941 (Blamer-Parrella)

Color, orchid shading to shrimp pink toward the tip. Petals crinkle, hence the name "Crinkles." Size of bloom 8½ inches x 5 inches or better. Long graceful stem holds the flower facing. Blooms are beautiful and very attractive to the eye. Early and prolific bloomer with insect-resisting foliage.

Plant 80c Root \$2.00

VIN-WELL EMPRESS, (Blamer-Parrella), S.C.

Lovely pure old rose of 8 to 9 inches, held just right on long slim stems. One that will produce a large number of good flowers all season.

Roots \$1.25

VIRGINIA RUTE (Chappaqua, 1939), I.D.

An exceptionally large flower on extra long stems. Blooms of deep rich velvety maroon with broad pointed petals, having tight centers, good form and substance, are held well out of the foliage on long erect stems. Easily grows to immense size without coddling. 12 to 14 inches by 9 inches deep. The bush growth is vigorous, the foliage insect resistant. Height 5 to 6 feet. Don't miss growing this one.

Roots \$1.00

VOLCANO (1937), F. D.

It received a score of 89 at the Trial Grounds where it was claimed one of the best. It is a very rugged grower, blooms measuring 9 to 12 inches in diameter and 6 to 8 inches deep. Huge dimensions in every way. The flowers are held on straight, strong stems two feet above the foliage. The color is an orange-flame red, which does not fade in the sun or rain.

Roots 65c

VOLKAERT'S CHAMPION, (Belgium), S.C.

The most beautiful Belgian introduction in this color. The large flowers are regularly formed with somewhat bended petals. The stems are strong and long. The color is pure yellow with salmon suffusions.

Roots 75c

WAAC (Crooks) F.D., 1943

We believe this to be the largest formal decorative in commerce. Blooms consistently 11 inches to 12 inches. Long, stiff stems. Plants are insect resistant. Color, pastel shades with cream center and pink outer petals. A sure winner in the blend class.

Plants \$5.00

WENOKA (Hulin, 1935), F. D.

Color a rosy mauve and flowers of large size, up to 13 inches in 1934. One of the finest stemmed ones I ever have seen. Never defeated in the Northwest and a sensation at the Trial Gardens.

Roots 40c

WHIRLAWAY, (Pittman-Dahliadel, 1942), I.D.

Color between lemon and sulphur-yellow. It can be put up against some of the present quality yellows and win. Large, 11 by 6 inches without much forcing. Foliage pointed like holly and very attractive. Good bush vitality. Stems fine.

Plants \$2.00 Roots \$6.00

WHITE JERSEY BEAUTY

A beautiful pure white of the Jersey Beauty formation. Good stems, fine for cutting.

Roots 85c

WHITE WINNER, (Wolfe Dahlia Gardens, 1941), I.D. to S.C.

Looks like a real, honest-to-goodness winner in the white, commercial class. Blooms 8 by 4 inches of splendid substance on long, strong stems, faces right and nary an open center. A fine keeper.

Roots 85c

WHITE WONDER (Kemp, 1933) I. D.

The largest fluffy white to date. Long, graceful, wavy petals and easily grown from 10 inches up. Strong plants and long, stiff stems. (H.R.)

Roots 35c

WILLIAM J. WYLLIE (Greenough-Ruschmohr, 1937), F. D.

Yellow, buff, pink. Good stems and large. Any one can grow it.

Roots 50c

WINNING WAYS, (Dixie, 1941), I. D.

Blooms 8 to 10 inches, center a creamy yellow, blending to a bright amaranth pink, each petal heavily based with chrome

Plants 80c Roots \$2.00

WOTANA, F. D., (Foreign)

The clean stem is 18 inches in length, straight and rigid, carrying the huge blooms facing high out of a vigorous bush. Color best described as mikado orange, slightly darker at center. The rich color does not fade or bleach. Reliable exhibition variety. This giant was highly recommended, from Australia.

Roots \$1.00

XANTINE, (Australian), Dec.

Australian novelty, color is of the deepest rich yellow. Long broad petals are formally arranged. Blooms 11 by 6 inches. Exhibition variety.

Plants 60c

YELLOW COMET, (Mrs. Derse-Ruschmohr, 1941), S. C.

Picric-yellow with wide petals which curl tight for half or more of their length. Won a Certificate at East Lansing in 1937. The clean cut blooms come up to 11 inches by 7 inches deep without too much disbudding. Stems are cane-like. The blooms come early and late on a healthy bush.

Plants 60c Roots \$1.50

YELLOW GLORY, (Frey-Dahliadel, 1940)

A magnificent semi-cactus of clear lemon yellow color. It is a large bloom 12 by 7 inches. It is beautiful in form with artistically twisted petals and a very high full center. Perfect stems, a good sturdy bush about 5 feet tall. Awarded Certificate of Merit and a place on the Honor Rolls.

Roots 85c

YOTO, (Ballay, 1941), S. C.

Informal decorative, amber yellow with shadings of pink. A great foreign Dahlia offered for the first time in this country. Strong long stiff stems. Many 12-inch blooms in my garden in 1941.

Plants 60c Roots \$1.25

YOUR LUCKY STAR (Am. D. Farms, 1939), Str. C.

Amaranth pink with white center, the color immediately demands admiration. The formation is also striking; regularly arranged quilled petals form a very nice straight cactus. The stems are ideal and hold the huge flowers in perfect pose. The plant is upright, healthy and easy to grow, requires no staking if topped when small. Flowers 12 x 7 inches. Achievement Medal and Grand Prize winner in 1938 shows.

Roots 70c



CLOSE-OUT BARGAINS of STANDARD VARIETIES

In order to make room for the new ones and reduce our plantings we list many fine ones in this selection. Stock limited of many, so when ordering after April 1st make a second choice. All varieties named and labeled.

COLLECTIONS

Your pick of twelve out of the 15c and 20c ones at \$1.25, or five at 75c, postage included, or let me pick you ten 40c and 50c ones out of this section and preceding one at \$2.65. With every order of \$3.00 or more of close outs from this section, a Root of a named variety, book value of \$1.00 will be included free.

Roots

ALYCE MARIE GALVIN (Galvin), F. D.

A beautiful white with faint tones of cameo pink on outer petals. A real grand Dahlia. A free and prolific bloomer.

\$0.30

ARELDA LLOYD (1934) (I. D.)

A soft, deep, yellow, slightly flushed with apple blossom pink with pink veining on the reverse of the petals, which sometimes fold back to the stem. Scored 87 A. D. S.

\$0.25*

CLASSIC, (1935), I. D.

The color is warm very definite but very light pink, almost a flesh color. It is attractive and a good grower. On Honor Roll.

\$0.25

DOROTHY STONE (F. & M., 1931) I. D.

This is a beautiful rose pink exhibition flower. The stems are good and the large blooms are produced quite freely. (H.R.)

\$0.35

CAMILE FRANCHON (Peo)

Aline red to rich garnet center, large yellow disk in center.

\$0.15

EDWARD REINFLEISCH, (Reinfleisch), F. D.

This is one of the best reds. A magnificent flower of glorious hue held erect on sturdy, cane-like stems.

\$0.30

EDISON'S WHITE, I. D.

Glistening white with pale lemon shadings from half way up petals to the center. Long waxy petals.

\$0.15

ELINOR M. RADDELL, (Felsing), I. D.

Lovely shell pink shading to deep rose at center. It is a fine clean growing Dahlia. Certificate of Merit, Storrs, 1932. Mr. Hart in his Honor Rolls of 1933, says: "It is very beautiful." And very fine in 1938.

\$0.25

ELITE SUNSET (85), I. D.

A very beautiful variety. Color, yellow center and out petals rose. Very attractive and strong grower, medium tall growing.

\$0.25

FAY BEATON, I. D.

A creamy white of most beautiful formation. Long, stiff stems.

\$0.20

FRAU SETH SCHIEF, I. D.

Bright lively chamois color, slightly suffused orange.

\$0.15

FURNITURE CITY (Edison), S. C.

Clear deep lavender shade with bluish cast on outer ends of petals.

\$0.15

GIRL OF HILLCREST (Scott, 1932), F. D.

Bright mikado orange. A strong grower and great favorite. (H. R.)

\$0.25

GOLDEN ECLIPSE (Badetty), F. D.

Color is a golden yellow with a salmon blush.

\$0.20

Edison's Dahlias

Roots

HIS MAJESTY (Boston), I. D.

Bright scarlet, formation of petals slightly irregular. Good grower.

H. R. S.—HUBERT ROY STOVEL (Seal), I. D.

True yellow. On Hart's Honor Roll for 1933. The golden yellow blooms are huge, held high above the foliage on long, stiff stems. Should be planted a little early.

\$0.15

INDIANA MOON (Martin, 1932) I. D.

This variety has won many first prizes in the Middle West. Grows without any forcing up around 10 inches and the blooms are held erect on long, stiff stems. It is flesh ochre with the lines of spinal pink running through some of the petals. (H.R.)

JANE COWL (Downs), I. D.

An immense flower of buff; produced on long stiff stems. Won several medals.

\$0.15

JERSEY'S BEACON (Waite), F. D.

Chinese scarlet, with a paler reverse, giving it a two-toned effect.

\$0.20

JERSEY'S BEAUTY (Waite), F. D.

Large true pink and old gold, blending with salmon.

\$0.15

JERSEY'S MELODY (Waite, 1932), S. C.

Tyran rose, shading to silver tips, with silver reverse. A very striking variety held on stiff stems. (H. R.)

\$0.20

JOSEPHINE G. (Grosscross Ruschmohr, 1932, S. C.

True rose pink petals tipped pinard yellow. Unusual bloom formation. (H. R.)

\$0.15

JUDGE SAMUEL SEABURY, I. D.

A very large Dahlia of unusual color, a blending of heliotrope on a white ground. The blooms average 10 inches. On Honor Roll.

\$0.20

KENTUCKY (Wigginton) Dec.

A wonderful new shade of creamy pink. Long stems, excellent cut flower, good keeper.

\$0.20

MARGARET W. WILSON (F. & M., 82E)

An easy variety to grow, producing a profusion of huge blooms. Face of petals creamy white with a phlox pink reverse, giving an opalescent effect.

\$0.15

MARSHALL'S PINK, F. D.

Pink with rose center. Fine for cutting.

\$0.20

MARY BAKER, (Wickersham, 1932), I. D.

A gorgeous golden yellow of beautiful formation. The flower is star shaped and of great size. Good stems.

\$0.35

MD. BREAK O'DAY, S. C.

Light autumn with dark orange blooms. Size 7-9 inches, good stems, and very attractive.

\$0.25

MRS. C. D. ANDERSON (Show)

Stems long and wiry. Flowers large and almost round in form. Color, rich clear purple. An early and very prolific bloomer.

\$0.20

MRS. CARL SALBACH, F. D.

Giant rose pink decorative with light base, long stiff stems, and excellent flower.

\$0.15

MRS. IDE VER WARNER (Marcean), F. D.

Deep mauve pink; one of the finest.

\$0.15

MYRA HOWARD (Glutzbach Dahliadel, 1932), I. D.

The color is a glowing combination of saffron yellow with tints of salmon, the entire effect being ochraceous orange. Winner of American Home Achievement Medal at New York.

\$0.25

MY PARTNER (Angell), I. D.

Another of Mr. Angell's that is very fine. The color is white outer rows of petals shaded with rose pink. This is a very prolific bloomer and a tall grower.

\$0.15

Latest Foreign Introductions

- | | Roots |
|---|------------------|
| NANAOUAKET (Richards), F. S.
Most beautiful shade of delicate orchid pink, each petal bordered with a hair line of deeper orchid color. | \$0.15 |
| OMAR KHAYYAM (Stout), F. D.
A Chinese red at the base of petals, shading to bright orange and tipped lighter, making a wonderful color effect. A tall healthy grower. (H. R.) | \$0.20 |
| ORANGE MOON (Wallace, 1935), F. D.
This new Dahlia is startlingly beautiful in form and color. The color is a soft buff shading to orange apricot deeper toward the base of petals and reverse shaded orange red. | \$0.20 |
| PENN CHARTER (Hall, 1932), F. D.
Bloom, 10 x 5 inches. A strong grower. Blooms have great depth and beauty. (H. R.) | \$0.15 |
| PRIDE OF STRATFORD (Meachem), F. D.
A giant orange yellow with base of shading to reddish bronze reverse. | \$0.15 |
| ROMANCE. I. D.
Soft pink to fawn color splashed carmine, center orange color. | \$0.20 |
| ROSE GEM, I. D.
A variety imported from Holland. A pleasing shade of red. | \$0.15 |
| ROSE FALLON. (Harding), F. D.
Very fine flower of pleasing shades of amber, russet and salmon. | \$0.20 |
| ROYCROFT
A clear warm buff color. Flowers are produced in great abundance on dwarf bushes. | \$0.15 |
| SANHICAN'S MONARCH (F. & M.), I. D.
Decorative. Rich tyrian rose centers; tips lighter. Splendid stems and foliage. | \$0.15 |
| SHAHRAZADE (Newsome, 1932), I. D.
Another remarkable shade of bright pink. The form and size resemble Jane Cowl and the bushes are also vigorous. (H. R.) | \$0.15 |
| SPRINGHILL FLAME (Edison), I. D.
Extra bright rose red to almost scarlet, shaded with bronze. | \$0.15 |
| THE COMMODORE (Scott Kemp, 1932), I. D.
Very large bright lemon yellow and prolific. Can easily be grown 12 inches or more. Not a tall grower, 4 to 5 feet, but strong plants. (H. R.) | \$0.15 |
| TREASURE ISLAND. (Maytrott), F. D.
A deep gold of large size. It is freely produced and has unusually good substance. Stems are fine and one of the best of bloomers. | \$0.20 |
| TWILIGHT. (Strait), I. D.
Here, we would say, is a decidedly improved Will Rogers. A very rank grower, with fine foliage and stems. Color a pinkish lavender with some white shadings. | \$0.25 |
| VLAMMENSPEL (Holland, 1937) S. C.
Lively orange flushed scarlet; does not burn; challenge cup winner. A grand cut flower. | Roots 35c |
| W. H. T. (McCarroll, 1931), F. D.
Rich old rose on begonia rose with shades on the reverse of petals. It is a tall, robust grower, producing big flowers on strong stems. | \$0.15 |
| W. H. HOGAN, F. D.
Bi-color Dahlia, odd shade of red, striped white. | \$0.15 |
| YANKEE GOLD (Wood, 1935), I. D.
One of the best large gold Dahlias in my garden and very outstanding in 1937. | Roots 35c |
| YANKEE KING (Woods), I. D.
Cornelian red, reverse lightly shaded mahow purple. Very vigorous, tall, and blossoms keep well when cut. | \$0.15 |

BEGINNERS' COLLECTION — STANDARD VARIETIES

12 good varieties all labeled, good growers, postage paid	\$1.40
4 — 25c Standard Varieties, postage paid	.80
8 — 25 and 30c Varieties, postage paid	\$1.60
10 — 25 and 30c Varieties, postage paid	\$1.85

MINIATURE DAHLIAS

Roots

Very popular for small gardens and cutting.

ANDREAS ORANGE, (Belgium) Miniature Cactus

This was outstanding in our garden this past season, and the best we have seen of this type. Color brilliant true orange; long slender stems, holding all flowers high above foliage, with a very prolific flowering habit. Extra.

\$0.50

BABY GRAND, M. C. (Hulin)

Mauve pink and white on fine stems, low bush and small stems. A little gem.

\$0.40

***BABY ROYAL (Min. S. C.)**

Delightful and dainty little flower of salmon pink and apricot with gold shadings. Flowers roll and incurve making a graceful blossom on long wiry stems. Free bloomer.

\$0.20

***BISHOP OF LLANDAFF**

A wonderful English bedding Dahlia. Intense red with dark bronze lacy foliage that contrasts beautifully with the flower.

\$0.25

***BUCKEYE BABY (Golden Rule 85S, 1936)**

This fine miniature is really small and deep and while the bushes are dwarf, the stems are fine for cutting. Color, gold buff lightly shaded red on the reverse.

\$0.20

***CARLA (Dahliadel 83C, 1934)**

Color is buff, heavily shaded old rose and suffused violet rose, a rich contrast to the dark green foliage. Ideal in the garden and for arrangements.

\$0.25

CORONNE D — (85S)

Bloom 3 x 1½ inches, bush 2 feet. This unique Miniature resembles a gardenia and is the best white we have ever seen. Stems and foliage are excellent.

\$0.20

***COTTAGE MAID (Hulin, 1935), S. C.**

A beautiful lavender pink held on good stems. Very fine.

\$0.20

DAD'S OWN (Groll), I. D.

Pink shading out to lighter tips.

\$0.50

***DICKIE MOORE, (1937), F. D.**

Fine bright red; good stems; 3-inch flower.

\$0.20

DUBONNET, M.S.C.

Color a rich, deep oxblood-red that does not fade or burn.

\$0.50

***EASTER GREETING, (S. C. For'n)**

A beautiful white with creamy cast at the base of petals. Form fine and flowers resemble pond lillies. Free bloomer and good stiff stems.

\$0.40

****ELIZABETH PAPE (C)**

Small pale pink and white cactus on dwarf bush.

\$0.20

***FAIRY (Bond)**

The formation and color the same as the famous Jersey Beauty. Pink.

\$0.20

***GUT CLUCK, I. D.**

Meaning good luck. A new German introduction that is very odd and showy. The small blooms are of clear, bright violet, with each petal tipped with pure white, making a very striking combination of colors.

\$0.35

HOT FLASH, (Duplex to Peony)

A bright orange red. Good stems. Fine for cutting.

\$0.15

A Trial Order Convinces You

- | | Roots |
|--|-----------------|
| HOMEACRES SWEETEST, Cac.
A fine small cactus, long stiff stems. Color autumn shades at base with light tips. A prize winner. | \$0.60 |
| *IRENE, F. D.
Fine old rose to coral pink; a perfect small exhibition flower held on long stems. | \$0.25 |
| JOAN (1937, M. C.)
Very attractive small flowering Dutch novelty with small bright rose flowers. The variety produces a profusion of blooms useful or border planting as well as cut flower. | \$0.40 |
| *JULIA, S. (C.)
The deep rose pink seems to have a golden suffusion at the base of the petals. Long stems. | \$0.30 |
| LITTLE COLONEL, (Cac.)
A fine new small straight cactus of soft pink with yellow center. Good stems, fine for cutting. | \$0.50 |
| LITTLE DIAMOND (S. C.) "Holland," 1939
"Holland," 1939. Bloom 3½ x 2, bush 2½ eet. Color, violet rose with sulphur yellow at center. Certified at Haarlem, Amsterdam and Paris. The most beautiful foreign miniature we have seen. Do not miss this one. | Root 85c |
| *LITTLE JEWEL, (Deco.)
One of the finest small pink Dahlias. | \$0.25 |
| LITTLE MISS MUFFET (Strasen), M. I. D.
Merits attention as a florist or cut flower. Charming bright rose-pink margins revolute for two-thirds of the length; tip sharply pointed. | \$0.50 |
| *LITTLE SNOW QUEEN
Small snow white cactus. Good bloomer. | \$0.25 |
| LITTLE NEMO (Chase 86S)
A striking crimson uniformly tipped white which is uncommon in bi-colors. Very pleasing and regular form, but sometimes grows too large for the Miniature class. The blooms are very beautiful. | \$0.30 |
| MRS. BLACK, (Semi-C.)
A brand new color and small perfect flower. Pointed petals cream at the base with about ¾ inch tipped bright carmine to rose. Fine stems and bush 2ft. | \$0.65 |
| *MT. WHITNEY SUNSET, D.
Fine scarlet and yellow. | \$0.35 |
| MISS VIVIAN (Mack, 1935), Min. Inf. D.
Compact pink; nearly a ball type. Long stiff stems. Good form and color. | \$0.40 |
| MRS. PUTNAM
Fine red and white, small, not over 2 inches and held on good stems. | \$0.30 |
| *ORCHID LADY (1935), F. D.
Here is a little champion. The color is orchid pink. It is a wonderful little Dahlia all the way round. | \$0.30 |
| PERSIMMON, (1935), F. D.
As the name implies, it a pure persimmon color and its brilliant beauty commands instant respect and attention. A most profuse bloomer. (H. R.) | \$0.25 |
| *PETER, (M. C.) (English)
Yellow suffused and lightly tipped red. In bloom early and late. | \$0.50 |

RED BONNET, (Lee-Hulin), F.D.

Reports say this is a true gem in the red miniatures. The blooms are small and produced abundantly all season.

\$0.50

RED EYE, (Dahliadel), Miniature Peony

An orange scarlet Miniature Peony. Dark foliage, striking in the garden. A dwarf bush for landscaping and border effects. Although flowers are diminutive they give a mass of color and are gems for arrangement use.

\$1.00

RED SEA, I. D.

Crimson, A fine Dahlia to have with Red Head.

\$0.40

***RHODA, I. D.**

Beautiful shade of shrimp pink. Fine cut flower.

\$0.35

RITA MARIE, (Menegel-Hulin), F. D.

Another extra good Miniature of last season with good reports on its performance in the East. Rather tall, bush bearing large quantities of glistening bronze flowers. A fine keeper and good root producer.

\$0.60

ROSALIE WHITE, M.F.D.

A most pleasing purple with many blooms streaked with white. Ideal stems and bush.

\$0.40

***RUFUS, I. D.**

Small bright red. Good color and stems, fine for cutting.

\$0.30

ROYALTY, (Australia)

Finest new lavender I have seen. Blooms 2 to 3 inches, held on fine stems. Prolific bloomer and good brancher. Bush 2 to 3 feet high.

\$0.75

***SNOW BUNTING, (Foreign), St. C.**

Small pure white good for cutting. Good bushes 4 to 5 feet.

\$0.40

SPRINGHILL ROSE, (Edison, 1942), F.D.

A beautiful rose red, 2 to 3-inch blooms held on long stiff stems and a prolific bloomer.

\$0.50

SUMMER SMILE, C.

Medium cactus blooms on extra long stems, very rigid. Great resistance to water and transportation. Very abundant foliage. Extra for cut flowers and show table. Yellow color with a rose center. A French variety.

\$0.50

SUSAN R. (Rev. Moyer-Ruschmohr), 1942

Semi-cactus miniature in the blend class of salmon, pink and tan, averaging 3 inches, blooming from August until frost. Bush grows about 3 feet tall. Winner in the open to all class for miniatures in the New York Show. Also Rockville Center, N. Y. Listed in eastern selection of Flower Grower Honor Roll. J. W. Johnston's Futurity in House Beautiful.

Plants 60c Roots \$1.25

***SYLVIA, F. D.**

A winner! A dahlia that grows well. The most free-flowering garnet red miniature in commerce. Ideal for cutting.

\$0.50

***TOOTS, (Lee-Hulin, 1940)**

Another little classic of bright lavender, about 2½ inches on long stems. A lovely little flower for vases or basket work. Bushes medium tall with lots of bloom all season. This is one of the best and a large stock permits you to own it.

\$0.50

***VERITY WADSWORTH, F. D.**

This is the Dahlia you have been wanting. A very bright yellow miniature. Fine form, profuse bloomer. Splendid cut flower.

\$0.25

WHISPER, (Orchid T.)

Combination of yellow and scarlet.

\$0.35

***WHITE PEARL (Sm. C.)**

Pure white, long wiry stems, blooms 4 inches in diameter.

\$0.20

Collections a Specialty

MINIATURE COLLECTION M.1

Six roots of the finest for Miniatures for Cut Flowers.
Value \$2.70 for only \$1.75.

Baby Grand — Joan — Eastern Greeting
Rosalie White — Home Acres Sweetest and
Sylvia.

MINIATURE COLLECTION M.2

15% discount on collection of 10 or more varieties of your selection.

POM PONS

The Finest Flowers for Cutting or Table Bouquets.
Will keep from three to five days.

	Roots
ACHILLES Flesh color to lavender, tipped pink.	\$0.15
AIMEE A small bronze flower with good stems.	\$0.20
AMBER QUEEN Beautiful shade of amber.	\$0.10
ANNA VON SCHWERIN Beautiful shell pink with white eye. Very fine.	\$0.15
ARTHUR KERLEY Rich cherry red.	\$0.25
*BETTY ANN, Pom. (Johnson, 1936) A soft clear pink exhibition pom pon with a fine list of winnings to its credit. One of the best of new pinks.	\$0.30
BIT O' LILAC Good flower of soft lavender lilac.	\$0.20
BOBBY LEE GRIBBLE Bright red, very small and very good.	Roots \$0.30
BRASS BUTTON, (Linduff), Pom. Very fine exhibition pom in the yellow class. Certificate of Merit, Storrs, in 1939, also Fairmont, W. Va., 1940. Winner as best yellow pom, Rockville Centre.	\$0.75
BRENNAN'S RED Bright red.	\$0.25
CHALLENGE A good red and white.	\$0.15
CHARMA (1938) Strawberry red flacked white, a new color.	\$0.25
CHICKIE Very small nopal red held on long stems.	\$0.20
*CIELETO A lovely mauve of soft lavender several tones lighter than Mary Munns, long stems, wonderful bloomer; has won many blue ribbons.	\$0.50
CLOVER, (Wilson-Ruschmohr, 1941) Cream white with lavender blush mostly at the tips, small profuse bloomer, held on good stems. H. R.	\$0.75
CORA MAY Salmon pink and yellow. Fine.	\$0.20

Edison's Dablias

Roots

CORAL GLOW, Pom.

The pure coral-pink of this new pompon blends so perfectly with the rich gold of the lowerhalf of the petals it produces a bloom of rare beauty and brilliancy. The plant is very sturdy and tall and is covered with flowers throughout the season. The stems are unusually long and carry the flowers well above the deep green foliage. A new one that you will want.

\$0.20

DARK EYE

White with lavender tips and center.

\$0.25

DARKEST OF ALL

Deep maroon of fair size. Long stems — good bush.

\$0.30

DARKSOME

One of the best dark maroons; nearly black.

\$0.25

DEE DEE

A perfect lavender. Fine for cutting.

\$0.15

DORIA

Rich maroon red, from Australia, most perfect tiny bloom, an easy winner. Stems long and strong.

\$0.40

EBONY, 1941

A new color in poms, almost black, very free bloomer.

Roots \$0.75

ELIZABETH

Fine golden yellow, edged red.

\$0.15

FRAU DE KNOBE

Pure white edged with purple or deep lavender. Very fine.

\$0.20

GOLDEN QUEEN

Deep golden yellow; a little large but long stemmed and makes it the finest for basket work or bouquets.

\$0.15

HONEY

Light honey yellow with faint suffusions of red on edge of petals. Long stems. (new).

\$0.20

ILA

One of the finest poms. A deep oxblood red. Perfect blooms and splendid stems.

\$0.50

JOE FETTE

Perfect pure white; stems good; free bloomer.

\$0.20

JOHNNIE PEPPIN

The most perfect dark crimson. Very fine for exhibition or cutting.

\$0.15

KITTY C.

Fine gold edged red, good stems, strong bushy plants.

\$0.15

LEADER

Lemon, tipped purple; free bloomer.

\$0.15

LEMON DROP (1937)

A new bright lemon yellow flower; fine stems.

\$0.20

LITTLE BEESWING

Small yellow, tipped deep cherry.

\$0.30

LITTLE DAVID

Fine russet orange, good stems.

\$0.20

LITTLE DORRIT

Small deep purple.

\$0.25

LITTLE EDITH

Yellow tipped scarlet. A perfect exhibition variety.

\$0.25

LITTLE JENNIE

A clear peach blossom pink color. Excellent for cutting.

\$0.25

Sure to Grow Roots

*LITTLE JOHNNIE	Another very fine bright red.	\$0.35
MARY MUNN	A fine pure lavender.	\$0.15
*MINNIE MELLE	Orchid rose with deeper eye. One of the best of the new poms.	\$0.30
MORNING MIST, (Badetty Bros., 1936)	Profuse bloomer 1½ to 2 inches. White with rosy lavender center and petals slightly outlined with lavender, are held on stiff, wiry stems ranging up to 15 inches in length.	\$0.15
NELLIE FRASER	Pink edged rose, long stems.	\$0.25
MRS. V. BRITAIN (Australian)	Fine pink held on good stems. A great prize winner.	\$0.40
PANSY	Small deep pansy purple, held on good stems.	\$0.30
PHYLLIS	Deep yellow edged and shaded rose red. Very fine.	\$0.15
PRIDE	A good dark red.	\$0.15
PRINCE CHARMING	Lavender heavily tipped with purple.	\$0.15
RAINIER'S MITE	A distinct novelty of a pompon Dahlia which is almost a perfect ball. The petals are as tight around the stem on the back of the bloom as on the face. The color is amaranth purple. Recommendation, Georgia, 1939.	\$0.75
RAPHAEL	A long stemmed dark red to maroon.	\$0.15
ROSA WILMOUTH	Fine rosy La France Pink; fine for cutting.	\$0.15
SHERRY (1939)	Royal purple. Fine for exhibition and a good root maker.	\$0.20
SILVERTIP	Small purple with center and reverse silver gray.	\$0.25
SNOW CLAD	A fine pure white on good stems.	\$0.25
TAKA'S PURPLE	Very small cerise purple on the finest clean stems.	\$0.15
TOM THUMB	Small bright red.	\$0.25
YELLOW GEM	The finest deep yellow; good stems and best for cuttings.	\$0.15
*TEENY WEENY, (Lee)	Pom Anemone. Color is a bright salmon. A little beauty and novelty you should not miss growing.	Net \$0.50

Bargain Pom Pon Collections

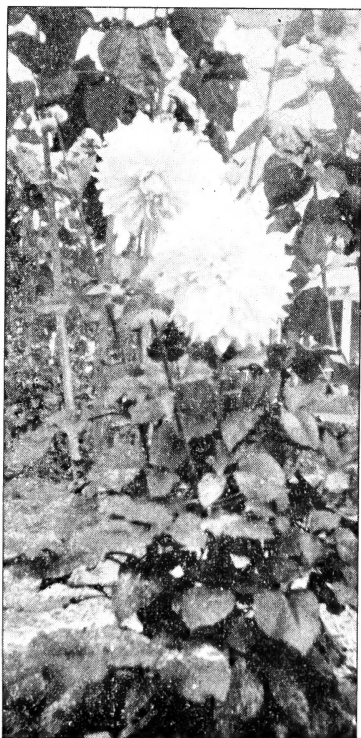
6 Pom Pon Roots, our pick	\$0.65
12 Pom Pon Roots, our pick	\$1.25
Any number of varieties, your selection of poms, valued at 25c or more from my list totaling \$5.00 in all for only	\$3.65.



Grown
in
Montana
from
EDISON'S
Roots

Satisfied Customers from far corners
of the United States

The way
they grow
in Florida
from
EDISON'S
Roots



1943 — SUPER PLANT COLLECTIONS
COLLECTION P-1

P-1-A

Alice McLean
All American
Capt. Cedarquist
Croydon Acme
Lowell Thomas
Magic Prince
Mary Lyon Dudley
Moonbia
Any 4 plants \$2.25.
All 8 at \$4.25.

P-1-B

Class
Confucius
Hillside Beauty
Links Blue Triumph
Mavis Tierney
Massasoit
Ruth Nichols
Lynn Fontanne
Any 4 plants \$2.65.
All 8 at \$5.25.

COLLECTION P-2

P-2-C

All American
Carolina Maid
DeMolay
Confucius
Ruth Nichols
Link's Blue Triumph
Hiltonia Apricot
Powerhouse
Any 4 plants \$2.25.
All 8 only \$4.30.

P-2-C

Alice McLean
Trojan
Gay Knight
Hillside Beauty
Yellow Comet
Mme. Jeanne
Mrs. W. Keene
Massasoit
Any 4 plants at \$2.30.
All 8 only \$4.50.

SUPER PLANT COLLECTION P-3
All Exhibition 1942 Introductions

Columbia
Dorothy Mae Hertel
Dorothy Geer
First Lady
Dean Shurtliff
Gold Commissioner
Indian Summer
James B. Lanktree
Mollie B.

Pink Profusion
Regalia
Scarlett O'Hara
Season's Best
Stephen Foster
Sydney
Top Flight
Tops
Velvet King
Whirlaway

Any 6 plants at \$8.75; any 8 at \$11.00; all 19 with gift plant only \$23.75.

Gift Root with Every Two or More Collections

SPECIAL NOTE: On all these special plant collection orders west of the Rocky Mountains add for extra shipping cost; for 4 plants 35c; 8 plants 70c and 12 plants \$1.35.

Special Plant Collections — Your Choice

Special No. 6. Any 8 plants listed \$1.00 for \$5.75 or any 4 at \$3.00.

Collection No. 7. Any 8 plants listed \$1.50 for \$9.00 or any 4 at \$4.75.

Collection No. 8. Any 8 plants listed \$2.00 for \$11.00 or any 4 at \$5.75.

Collection No. 9. Any 8 plants listed over \$2.00 at 30 percent off regular list price, except 1941 introductions.

Collection No. 10. Any 4 plants listed over \$2.00 at 25 percent off regular list price, except 1942 introductions.

Add 25 cents for special handling on all these collections.

PLANT NOTE:—The varieties we make up our plant collections from we usually put from two to five clumps of each in the propagating bench, but some varieties do not always propagate plants fast enough to fill all our plant orders and sometimes we have to ask you to substitute a variety, but will always try and give you what you desire or your choice of others.

NOTE:—Do not forget 25c for Special Handling of Plants. It pays.

PLANTING INSTRUCTIONS

Roots

Roots should be planted in trenches or holes, four inches deep in heavy soil and six inches deep in sandy soil laid flat down (not on end) and covered with earth not over two inches in depth, filling in as the plant develops. Where drainage is poor, do not plant so deep and keep a furrow open between rows to facilitate drainage in wet weather.

You cannot expect a dahlia to grow in any wet soggy ground.

Plants

Plants are shipped in boxes three inches square with no bottoms. When received they should be carefully removed from the package and the moss and packing taken from the top of the boxes and the plant given a good watering, then set in a shaded spot for a day or two to let them freshen and harden up before planting. You do not need to remove the soil from the roots of the plants we ship you in our box bands as the dirt is especially mixed and will be of much benefit in the growth. Just remove the wooden band by unwrapping the band. The top of the boxes should be set about three inches below the level of the ground, watered well, and the hole partially filled when the plant is set and then gradually filled as the plant grows. If your soil is poor it is a good idea to prepare the ground ahead of time by using a good fertilizer for dahlias and working it in thoroughly. Bonemeal is one of the safest fertilizers and a little, about three tablespoonsful, can be worked in the dirt under each hill and covered one inch, then planting on top of it. Grass cuttings and the leaves from soft wood trees like poplar, maple, boxwoods and barn yard manure spaded in the ground in the fall or early spring improves the ground greatly. Where dahlia plants are to be set in heavy soil it is advisable to at least prepare the hill by mixing sand or the coarser part of coal ashes into the ground where the plants are to be set.

GROW MY PLANTS AND BE CONVINCED.

BUY MICHIGAN GROWN DAHLIAS.

THEY GROW THE BEST

DAHLIA FRIENDS

Join your State Dahlia Society or the American Dahlia Society and get the latest Dahlia news.

**WE GROW THE BEST AND
AIM TO PLEASE**

**TRY OUR PLANT AND
ROOT COLLECTIONS**

Member of

**American Dahlia Society
Michigan Dahlia Society
Indiana Dahlia Society
West Virginia Dahlia Society
Northeast Pennsylvania Dahlia Society**

SPRINGHILL DAHLIA FARM

A. T. EDISON

R. R. No. 2

Phone 7-8212

Grand Rapids, Michigan